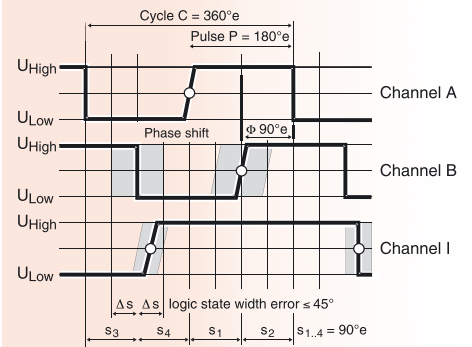
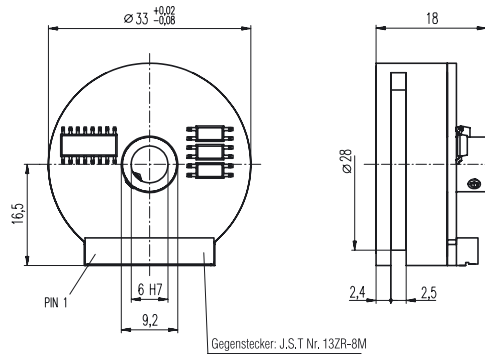


# Encoder RCM 15, 512 - 2048 CPT, 3 Channels, with Line Driver RS 422



- Stock program
- Standard program
- Special program (on request!)

## Order Number

248760

## Type

Counts per turn	2048
Number of channels	3
Max. operating frequency (kHz)	200



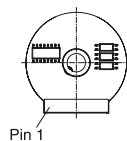
## Combination

+ Motor	Page	+ Gearhead	Page	Overall length [mm] / • see: + Gearhead
EC 45, 200 W	163			116.5
EC 45, 300 W	164			155.5

## Technical Data (provisional)

Supply voltage	5 V $\pm$ 5 %
Output signal	RS 422
Phase shift $\Phi$ (nominal)	90°e
Logic state width s	min. 45°e
Index pulse width (nominal)	360°e
Operating temperature range	-10 ... +100°C
Moment of inertia	$\leq 3.11 \text{ gcm}^2$

## Pin Allocation



Pin	Connector
Pin 1	V <sub>CC</sub> 1
Pin 2	GND 1
Pin 3	Channel A
Pin 4	Channel A
Pin 5	Index I
Pin 6	Index I
Pin 7	Channel B
Pin 8	Channel B
Pin 9	Commutation signal 2
Pin 10	Commutation signal 1
Pin 11	Commutation signal 3
Pin 12	GND 2
Pin 13	V <sub>CC</sub> 2