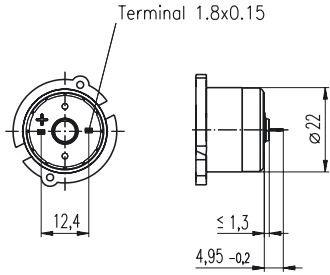


DC-Tacho DCT 22, 0.52 Volt



Important Information

- Tacho with moving coil, maxon system.
- Tacho with precious metal commutation.
- To establish total inertia add motor and tacho inertias.
- With the output shaft turning CW as seen from the mounting surface, the tacho output voltage will be positive at the + terminal.
- A high impedance load is recommended at tacho terminals.
- The tacho current should be kept low.
- The indicated resonance frequency refers to the motor-tacho rotor system.

- Stock program
- Standard program
- Special program (on request!)

Order Number

118908	118909	118910
--------	--------	--------

Type	2	3	4
Shaft diameter (mm)			



Combination

+ Motor	Page	+ Gearhead	Page	Overall length [mm] / • see: + Gearhead
RE 25, 10 W	77			76.8
RE 25, 10 W	77	GP 26, 0.5 - 2.0 Nm	216	•
RE 25, 10 W	77	GP 32, 0.75 - 4.5 Nm	218	•
RE 25, 10 W	77	GP 32, 1.0 - 6.0 Nm	220	•
RE 25, 10 W	77	GP 32, 0.4 - 2.0 Nm	222	•
RE 25, 20 W	78			76.8
RE 25, 20 W	78	GP 26, 0.5 - 2.0 Nm	216	•
RE 25, 20 W	78	GP 32, 0.75 - 4.5 Nm	218	•
RE 25, 20 W	78	GP 32, 1.0 - 6.0 Nm	220	•
RE 25, 20 W	78	GP 32, 0.4 - 2.0 Nm	222	•
RE 26, 18 W	79			79.8
RE 26, 18 W	79	GP 26, 0.5 - 2.0 Nm	216	•
RE 26, 18 W	79	GP 32, 0.75 - 4.5 Nm	218	•
RE 26, 18 W	79	GP 32, 1.0 - 6.0 Nm	220	•
RE 26, 18 W	79	GP 32, 0.4 - 2.0 Nm	222	•
RE 35, 90 W	81			89.0
RE 35, 90 W	81	GP 32, 0.75 - 4.5 Nm	219	•
RE 35, 90 W	81	GP 32, 1.0 - 6.0 Nm	220	•
RE 35, 90 W	81	GP 42, 3.0 - 15 Nm	224	•
RE 36, 70 W	82			89.3
RE 36, 70 W	82	GP 32, 0.75 - 4.5 Nm	219	•
RE 36, 70 W	82	GP 32, 1.0 - 6.0 Nm	220	•
RE 36, 70 W	82	GP 32, 0.4 - 2.0 Nm	222	•
RE 36, 70 W	82	GP 42, 3.0 - 15 Nm	224	•

Technical Data

Output voltage per 1000 rpm	0.52 V	Max. recommended current	10 mA
Terminal resistance Tacho	56.6 Ω	Tolerance of the output voltage	± 15 %
Typical peak to peak ripple	≤ 6 %	Rotor inertia (tacho only)	< 3 gcm ²
Ripple frequency per turn	14	Resonance frequency with motors on p. 77 - 79	> 2 kHz
Linearity between 500 and 5000 rpm unloaded	± 0.2 %	with motors on pages 86, 88	> 3 kHz
Linearity with 10 kΩ load resistance	± 0.7 %	with motors on pages 81, 82	> 4.5 kHz
Reversal error	± 0.1 %	Temperature range	-20 ... +65°C
Temperature coefficient of EMF (magnet)	-0.02 % / °C		
Temperature coefficient of coil resistance	+0.4 % / °C		

Option: Pigtails in place of solder terminals

Connection example

