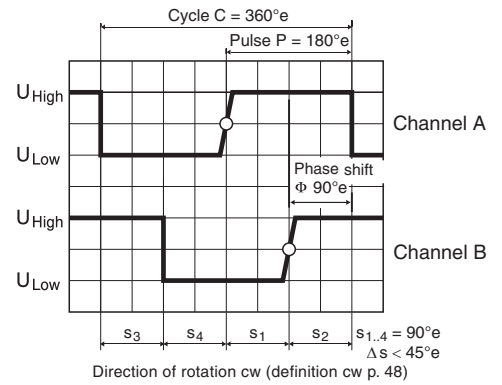
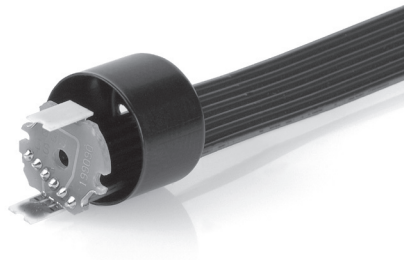
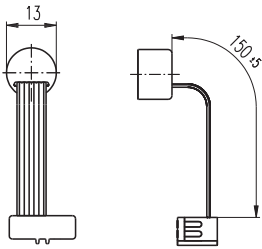


Encoder MEnc 13, 16 Counts per turn, 2 Channels



- Stock program
- Standard program
- Special program (on request)

Order Number

110778

Type

Counts per turn	16
Number of channels	2
Max. operating frequency (kHz)	20
Max. speed (rpm)	75000



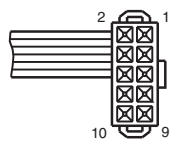
maxon Modular System

+ Motor	Page	+ Gearhead	Page	Overall length [mm] / ● see Gearhead
A-max 26	101-107			51.8
A-max 26	101-107 GP 26, 0.5 - 2.0 Nm	228	●	
A-max 26	101-107 GS 30, 0.07 - 0.2 Nm	229	●	
A-max 26	101-107 GP 32, 0.75 - 4.5 Nm	230	●	
A-max 26	101-107 GP 32, 0.75 - 6.0 Nm	230/231	●	
A-max 26	101-107 GS 38, 0.1 - 0.6 Nm	237	●	
A-max 26	101-107 GP 32 S	247/248	●	

Technical Data

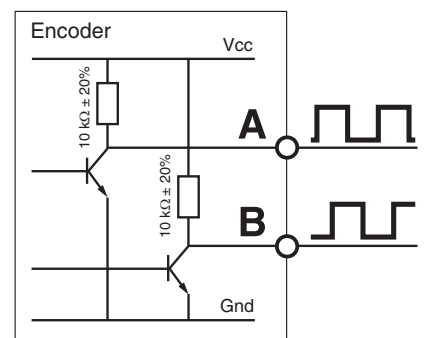
Supply voltage V_{CC}	3.8 - 24 V
Output signal $V_{CC} = 5$ VDC	TTL compatible
Phase shift	$90^\circ e \pm 45^\circ e$
Power input at $V_{CC} 5$ VDC	max. 8 mA
Inertia of the magnetic disc	0.07 gcm ²
Operating temperature rang	-20 ... +80°C
Open collector output with integrated pull-up resistance	10 kΩ ± 20%

Pin Allocation



- 1 Motor+
 - 2 V_{CC}
 - 3 Channel A
 - 4 Channel B
 - 5 GND
 - 6 Motor-
- Pin type DIN 41651 (Type 3M 89110-0101 HA) flat band cable AWG 28

Connection example



The index signal I is synchronised with channel A or B.