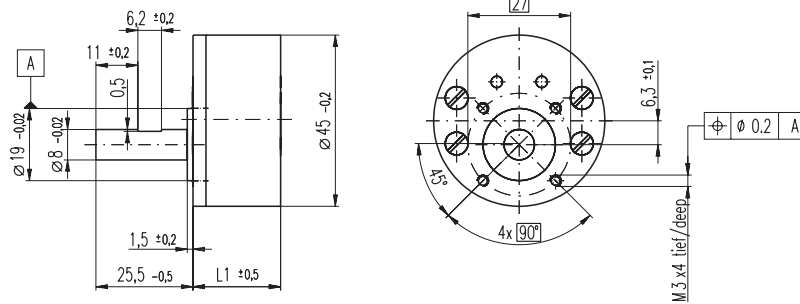


# Spur Gearhead GS 45 A $\varnothing 45$ mm, 0.5 - 2.0 Nm

maxon gear



M 1:2

## Technical Data

Spur Gearhead	straight teeth
Output shaft	stainless steel, hardened
Bearing at output	ball bearing
Radial play, 10 mm from flange	max. 0.15 mm
Axial play	0.02 - 0.2 mm
Max. radial load, 10 mm from flange	180 N
Max. permissible axial load	60 N
Max. permissible force for press fits	60 N
Recommended input speed	< 6000 rpm
Recommended temperature range	-20 ... +100°C
Extended area as option	-35 ... +100°C

- Stock program
- Standard program
- Special program (on request)

## Order Number

Gearhead Data	Order Number				
	301177	301175	301181	301186	301191
1 Reduction	5 : 1	18 : 1	61 : 1	212 : 1	732 : 1
2 Reduction absolute	51/10	459/26	20655/338	125862/595	492790/673
3 Mass inertia gcm <sup>2</sup>	3.7	1.6	1.0	0.8	0.8
4 Max. motor shaft diameter mm	3	3	3	3	3
<b>Order Number</b>	<b>301178</b>	<b>301173</b>	<b>301182</b>	<b>301187</b>	<b>301192</b>
1 Reduction	7 : 1	26 : 1	89 : 1	310 : 1	1072 : 1
2 Reduction absolute	209/28	9405/364	66632/745	183281/592	307572/287
3 Mass inertia gcm <sup>2</sup>	3.1	1.4	1.0	0.8	0.8
4 Max. motor shaft diameter mm	3	3	3	3	3
<b>Order Number</b>	<b>301179</b>	<b>266595</b>	<b>301184</b>	<b>301188</b>	<b>301193</b>
1 Reduction	9 : 1	32 : 1	111 : 1	385 : 1	1334 : 1
2 Reduction absolute	2295/247	8523/265	334/3	173808/451	198769/149
3 Mass inertia gcm <sup>2</sup>	2.1	1.4	0.6	0.5	0.4
4 Max. motor shaft diameter mm	3	3	3	3	3
<b>Order Number</b>	<b>301180</b>	<b>301171</b>	<b>301185</b>	<b>301189</b>	<b>301194</b>
1 Reduction	14 : 1	47 : 1	163 : 1	564 : 1	1952 : 1
2 Reduction absolute	2475/182	6221/132	141157/861	161880/287	1929023/988
3 Mass inertia gcm <sup>2</sup>	2.2	0.9	0.5	0.5	0.4
4 Max. motor shaft diameter mm	3	3	3	3	3
5 Number of stages	2	3	4	5	6
6 Max. continuous torque Nm	0.5	2.0	2.0	2.0	2.0
7 Intermittently permissible torque at gear output Nm	0.75	2.5	2.5	2.5	2.5
8 Sense of rotation, drive to output	=	≠	=	≠	=
9 Max. efficiency %	87	76	66	59	53
10 Weight g	224	224	255	287	313
11 Average backlash no load °	1.6	2.0	2.4	2.8	3.2
12 Gearhead length L1* mm	23.5	23.5	26.9	30.4	33.8

\* for EC 45 flat, IE, is L1 max. + 4.0 mm



## Combination

+ Motor	Page	+ Tacho / Brake	Page	Overall length [mm]
= Motor length + gearhead length + (tacho / brake) + assembly parts				
EC 45 flat, 30 W	202			40.5    40.5    43.9    47.4    50.8
EC 45 flat, 50 W	203			45.4    45.4    48.8    52.3    55.7
EC 45 flat, IE, IP 00	204			59.7    59.7    63.1    66.6    70.0
EC 45 flat, IE, IP 40	204			61.9    61.9    65.3    68.8    72.2
EC 45 flat, IE, IP 00	205			64.7    64.7    68.1    71.6    75.0
EC 45 flat, IE, IP 40	205			66.9    66.9    70.3    73.8    77.2