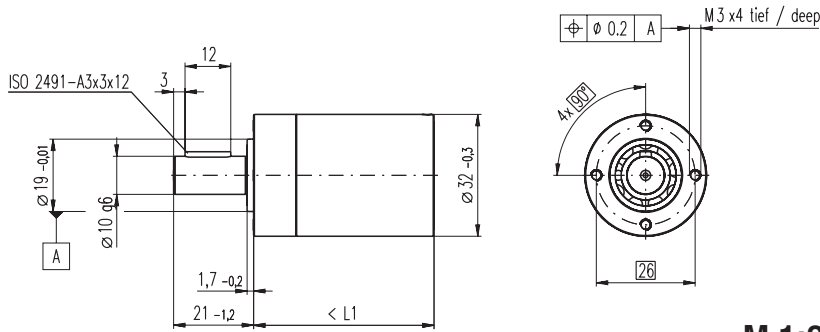


# Planetary Gearhead GP 32 HP $\varnothing 32$ mm, 8.0 Nm



M 1:2

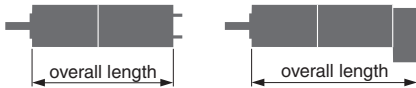
## Technical Data

Planetary Gearhead	straight teeth
Output shaft	stainless steel
Bearing at output	ball bearing
Radial play, 10 mm from flange	max. 0.14 mm
Axial play	max. 0.4 mm
Max. radial load, 10 mm from flange	200 N
Max. permissible axial load	120 N
Max. permissible force for press fits	120 N
Sense of rotation, drive to output	=
Recommended input speed	< 8000 rpm
Recommended temperature range	-20 ... +100°C
Extended area as option	-35 ... +100°C

- Stock program
- Standard program
- Special program (on request)

## Order Number

	320247	326663	326664	326668	326672	324947	324952
<b>Gearhead Data</b>							
1 Reduction	14 : 1	33 : 1	51 : 1	111:1	190 : 1	456 : 1	706 : 1
2 Reduction absolute	676/49	529/16	17576/343	13824/125	456976/2401	89401/196	158171/224
3 Max. motor shaft diameter	mm 6	3	6	4	6	3	3
<b>Order Number</b>	326659		326665	326669	324942	324948	324953
1 Reduction	18 : 1		66 : 1	123 : 1	246 : 1	492 : 1	762 : 1
2 Reduction absolute	624/35		16224/245	6877/56	421824/1715	86112/175	19044/25
3 Max. motor shaft diameter	mm 6		6	3	6	6	4
<b>Order Number</b>	326660		326666	326670	324944	324949	324954
1 Reduction	21 : 1		79 : 1	132 : 1	295 : 1	531 : 1	913 : 1
2 Reduction absolute	299/14		3887/49	3312/25	101062/343	331776/625	36501/40
3 Max. motor shaft diameter	mm 6		6	4	6	4	3
<b>Order Number</b>	326661		326667	326671	324945	324950	
1 Reduction	23 : 1		86 : 1	159 : 1	318 : 1	589 : 1	
2 Reduction absolute	576/25		14976/175	1587/10	389376/1225	20631/35	
3 Max. motor shaft diameter	mm 4		6	3	6	6	
<b>Order Number</b>	326662		320297		324946	324951	
1 Reduction	28 : 1		103 : 1		411 : 1	636 : 1	
2 Reduction absolute	138/5		3588/35		359424/875	79488/125	
3 Max. motor shaft diameter	mm 4		6		6	4	
4 Number of stages	2	2	3	3	4	4	4
5 Max. continuous torque	Nm 8	8	8	8	8	8	8
6 Intermittently permissible torque at gear output	Nm 12	12	12	12	12	12	12
7 Max. efficiency	% 75	75	70	70	60	60	60
8 Weight	g 178	178	213	213	249	249	249
9 Average backlash no load	° 0.8	0.8	1.0	1.0	1.0	1.0	1.0
10 Mass inertia	gcm <sup>2</sup> 0.8	0.8	0.7	0.7	0.7	0.7	0.7
11 Gearhead length L1	mm 47.4	47.4	54.1	54.1	60.8	60.8	60.8



+ Motor		+ Tacho / Brake		Overall length [mm] = Motor length + gearhead length + (tacho / brake) + assembly parts						
Page	Page	Page	Page							
RE 35, 90 W 82				118.5	118.5	125.2	125.2	131.9	131.9	131.9
RE 35, 90 W 82	MR	259		129.8	129.8	136.5	136.5	143.2	143.2	143.2
RE 35, 90 W 82	HED_ 5540	262/264		139.4	139.4	146.1	146.1	152.8	152.8	152.8
RE 35, 90 W 82	DCT 22	271		136.5	136.5	143.2	143.2	149.9	149.9	149.9
RE 35, 90 W 82	AB 28	308		154.5	154.5	161.2	161.2	167.9	167.9	167.9
RE 35, 90 W 82	HEDS 5540 / AB 28	262/308		171.6	171.6	178.3	178.3	185.0	185.0	185.0
EC-power 30, 100 W 187				94.5	94.5	101.2	101.2	107.9	107.9	107.9
EC-power 30, 100 W 187	MR	258		106.7	106.7	113.4	113.4	120.1	120.1	120.1
EC-power 30, 100 W 187	HEDL 5540	266		115.1	115.1	121.8	121.8	128.5	128.5	128.5
EC-power 30, 100 W 187	AB 20	306		130.7	130.7	137.4	137.4	144.1	144.1	144.1
EC-power 30, 100 W 187	HEDL 5540/AB 20	266/306		151.5	151.5	158.2	158.2	164.9	164.9	164.9
EC-power 30, 200 W 188				111.5	111.5	118.2	118.2	124.9	124.9	124.9
EC-power 30, 200 W 188	MR	258		123.7	123.7	130.4	130.4	137.1	137.1	137.1
EC-power 30, 200 W 188	HEDL 5540	266		132.1	132.1	138.8	138.8	145.5	145.5	145.5
EC-power 30, 200 W 188	AB 20	306		147.7	147.7	154.4	154.4	161.1	161.1	161.1
EC-power 30, 200 W 188	HEDL 5540/AB 20	266/306		168.5	168.5	175.2	175.2	181.9	181.9	181.9
MCD EPOS, 60 W 303				167.5	167.5	174.2	174.2	180.9	180.9	180.9
MCD EPOS P, 60 W 303				167.5	167.5	174.2	174.2	180.9	180.9	180.9