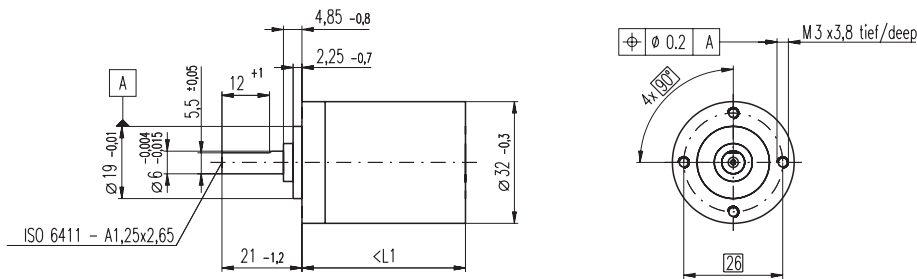


# Planetary Gearhead GP 32 C $\varnothing 32$ mm, 1.0 - 6.0 Nm

Ceramic Version



## Technical Data

Planetary Gearhead	straight teeth
Output shaft	stainless steel
Shaft diameter as option	8 mm
Bearing at output	ball bearing
Radial play, 5 mm from flange	max. 0.14 mm
Axial play	max. 0.4 mm
Max. radial load, 10 mm from flange	140 N
Max. permissible axial load	120 N
Max. permissible force for press fits	120 N
Sense of rotation, drive to output	=
Recommended input speed	< 8000 rpm
Recommended temperature range	-20 ... +100°C
Extended area as option	-35 ... +100°C

M 1:2

Option: Low-noise version

- Stock program
- Standard program
- Special program (on request)

## Order Number

	166930	166933	166938	166939	166944	166949	166954	166959	166962	166967	166972	166977
<b>Gearhead Data</b>												
1 Reduction	3.7 : 1	14 : 1	33 : 1	51 : 1	111 : 1	246 : 1	492 : 1	762 : 1	1181 : 1	1972 : 1	2829 : 1	4380 : 1
2 Reduction absolute	26/7	676/49	529/16	17576/343	13824/125	421824/1715	86112/175	19044/25	10123776/6575	8626176/4375	495144/175	109503/25
3 Max. motor shaft diameter mm	6	6	3	6	4	4	3	3	4	4	3	3
<b>Order Number</b>	<b>166931</b>	<b>166934</b>		<b>166940</b>	<b>166945</b>	<b>166950</b>	<b>166955</b>	<b>166960</b>	<b>166963</b>	<b>166968</b>	<b>166973</b>	<b>166978</b>
1 Reduction	4.8 : 1	18 : 1		66 : 1	123 : 1	295 : 1	531 : 1	913 : 1	1414 : 1	2189 : 1	3052 : 1	5247 : 1
2 Reduction absolute	24/5	624/35		16224/245	6877/56	101062/343	331776/625	36501/40	2425488/1715	536406/245	1907712/625	839523/160
3 Max. motor shaft diameter mm	4	4		4	3	3	4	3	3	3	3	3
<b>Order Number</b>	<b>166932</b>	<b>166935</b>		<b>166941</b>	<b>166946</b>	<b>166951</b>	<b>166956</b>	<b>166961</b>	<b>166964</b>	<b>166969</b>	<b>166974</b>	<b>166979</b>
1 Reduction	5.8 : 1	21 : 1		79 : 1	132 : 1	318 : 1	589 : 1	1093 : 1	1526 : 1	2362 : 1	3389 : 1	6285 : 1
2 Reduction absolute	23/4	299/14		3887/49	3312/25	389376/1225	20631/35	279841/256	9345024/6125	2066688/375	474513/140	6436343/1024
3 Max. motor shaft diameter mm	3	3		3	3	4	3	3	4	3	3	3
<b>Order Number</b>		<b>166936</b>		<b>166942</b>	<b>166947</b>	<b>166952</b>	<b>166957</b>		<b>166965</b>	<b>166970</b>	<b>166975</b>	
1 Reduction		23 : 1		86 : 1	159 : 1	411 : 1	636 : 1		1694 : 1	2548 : 1	3656 : 1	
2 Reduction absolute		576/25		14976/175	1587/10	359424/375	79488/125		1162213/686	7962624/3125	457056/125	
3 Max. motor shaft diameter mm		4		4	3	4	3		3	4	3	
<b>Order Number</b>		<b>166937</b>		<b>166943</b>	<b>166948</b>	<b>166953</b>	<b>166958</b>		<b>166966</b>	<b>166971</b>	<b>166976</b>	
1 Reduction		28 : 1		103 : 1	190 : 1	456 : 1	706 : 1		1828 : 1	2623 : 1	4060 : 1	
2 Reduction absolute		138/5		3588/35	12167/64	89401/196	158171/224		2238912/1225	2056623/784	3637933/896	
3 Max. motor shaft diameter mm		3		3	3	3	3		3	3	3	
4 Number of stages		1		2	2	3	3		4	4	5	
5 Max. continuous torque Nm		1		3	3	6	6		6	6	6	
6 Intermittently permissible torque at gear output Nm		1.25		3.75	3.75	7.5	7.5		7.5	7.5	7.5	
7 Max. efficiency %		80		75	75	70	70		60	60	50	
8 Weight g		118		162	162	194	194		226	226	258	
9 Average backlash no load °		0.7		0.8	0.8	1.0	1.0		1.0	1.0	1.0	
10 Mass inertia gcm <sup>2</sup>		1.5		0.8	0.8	0.7	0.7		0.7	0.7	0.7	
11 Gearhead length L1 mm		26.4		36.3	36.3	43.0	43.0		49.7	49.7	56.4	

## Combination

+ Motor	Page	+ Tacho / Brake	Page	Overall length [mm] = Motor length + gearhead length + (tacho / brake) + assembly parts											
A-max 26	115-122			71.2	81.1	81.1	87.8	87.8	94.5	94.5	94.5	101.2	101.2	101.2	101.2
A-max 26	115-121	MEnc 13	270	78.3	88.2	88.2	94.9	94.9	101.6	101.6	101.6	108.3	108.3	108.3	108.3
A-max 26	116-122	MR	254	80.0	89.9	89.9	96.6	96.6	103.3	103.3	103.3	110.0	110.0	110.0	110.0
A-max 26	116-122	Enc 22	260	85.6	95.5	95.5	102.2	102.2	108.9	108.9	108.9	115.6	115.6	115.6	115.6
A-max 26	116-122	HED_ 5540	262/264	90.0	99.9	99.9	106.6	106.6	113.3	113.3	113.3	120.0	120.0	120.0	120.0
A-max 32	123/125			89.4	99.3	99.3	106.0	106.0	112.7	112.7	112.7	119.4	119.4	119.4	119.4
A-max 32	124/126			88.0	97.9	97.9	104.6	104.6	111.3	111.3	111.3	118.0	118.0	118.0	118.0
A-max 32	124/126	MR	255	99.2	109.1	109.1	115.8	115.8	122.5	122.5	122.5	129.2	129.2	129.2	129.2
A-max 32	124/126	HED_ 5540	262/264	108.8	118.7	118.7	125.4	125.4	132.1	132.1	132.1	138.8	138.8	138.8	138.8
RE-max 29	145-148			71.2	81.1	81.1	87.8	87.8	94.5	94.5	94.5	101.2	101.2	101.2	101.2
RE-max 29	146/148	MR	254	80.0	89.9	89.9	96.6	96.6	103.3	103.3	103.3	110.0	110.0	110.0	110.0
EC 32, 80 W	164			86.5	96.4	96.4	103.1	103.1	109.8	109.8	109.8	116.5	116.5	116.5	116.5
EC 32, 80 W	164	HED_ 5540	262/264	104.9	114.8	114.8	121.5	121.5	128.2	128.2	128.2	134.9	134.9	134.9	134.9
EC 32, 80 W	164	Res 26	272	106.6	116.5	116.5	123.2	123.2	129.9	129.9	129.9	136.6	136.6	136.6	136.6
EC-max 22, 25 W	177			75.0	84.9	84.9	91.6	91.6	98.3	98.3	98.3	105.0	105.0	105.0	105.0
EC-max 22, 25 W	177	MR	257	84.7	94.6	94.6	101.3	101.3	108.0	108.0	108.0	114.7	114.7	114.7	114.7
EC-max 22, 25 W	177	AB 20	306	110.6	120.5	120.5	127.2	127.2	133.9	133.9	133.9	140.6	140.6	140.6	140.6
EC-max 30, 40 W	178			68.5	78.4	78.4	85.1	85.1	91.8	91.8	91.8	98.5	98.5	98.5	98.5
EC-max 30, 40 W	178	MR	258	80.7	90.6	90.6	97.3	97.3	104.0	104.0	104.0	110.7	110.7	110.7	110.7
EC-max 30, 40 W	178	HEDL 5540	266	89.1	99.0	99.0	105.7	105.7	112.4	112.4	112.4	119.1	119.1	119.1	119.1
EC-max 30, 40 W	178	AB 20	306	104.1	114.0	114.0	120.7	120.7	127.4	127.4	127.4	134.1	134.1	134.1	134.1
EC-max 30, 40 W	178	HEDL 5540 / AB 20	266/306	128.1	138.0	138.0	144.7	144.7	151.4	151.4	151.4	158.1	158.1	158.1	158.1
EC-power 22, 90 W	185			75.1	85.0	85.0	91.7	91.7	98.4	98.4	98.4	105.1	105.1	105.1	105.1
EC-power 22, 120 W	186			92.5	102.4	102.4	109.1	109.1	115.8	115.8	115.8	122.5	122.5	122.5	122.5
MCD EPOS, 60 W	303			146.5	156.4	156.4	163.1	163.1	169.8	169.8	169.8	176.5	176.5	176.5	176.5
MCD EPOS P, 60 W	303			146.5	156.4	156.4	163.1	163.1	169.8	169.8	169.8	176.5	176.5	176.5	176.5
EC-i 40, 50 W	199			58.0	67.9	67.9	74.6	74.6	81.3	81.3	81.3	88.0	88.0	88.0	88.0
EC-i 40, 50 W	199	MR	259	73.7	83.6	83.6	90.3	90.3	97.0	97.0	97.0	103.7	103.7	103.7	103.7
EC-i 40, 50 W	199	HEDL 5540	266	81.4	91.3	91.3	98.0	98.0	104.7	104.7	104.7	111.4	111.4	111.4	111.4
EC-i 40, 70 W	200			68.0	77.9	77.9	84.6	84.6	91.3	91.3	91.3	98.0	98.0	98.0	98.0
EC-i 40, 70 W	200	MR	259	83.7	93.6	93.6	100.3	100.3	107.0	107.0	107.0	113.7	113.7	113.7	113.7
EC-i 40, 70 W	200	HEDL 5540	266	91.4	101.3	101.3	108.0	108.0	114.7	114.7	114.7	121.4	121.4	121.4	121.4