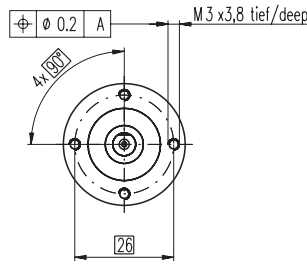
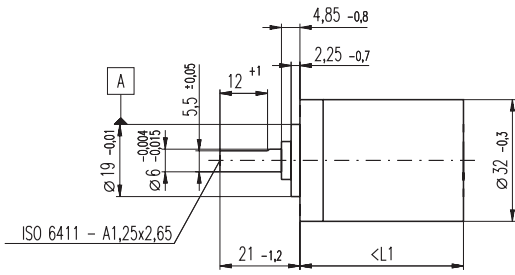


# Planetary Gearhead GP 32 C $\varnothing 32$ mm, 1.0 - 6.0 Nm

Ceramic Version

maxon gear



M 1:2

## Technical Data

Planetary Gearhead	straight teeth
Output shaft	stainless steel
Shaft diameter as option	8 mm
Bearing at output	ball bearing
Radial play, 5 mm from flange	max. 0.14 mm
Axial play	max. 0.4 mm
Max. radial load, 10 mm from flange	140 N
Max. permissible axial load	120 N
Max. permissible force for press fits	120 N
Sense of rotation, drive to output	=
Recommended input speed	< 8000 rpm
Recommended temperature range	-20 ... +100°C
Extended area as option	-35 ... +100°C

Option: Low-noise version

- Stock program
- Standard program
- Special program (on request)

## Order Number

	166930	166933	166938	166939	166944	166949	166954	166959	166962	166967	166972	166977
<b>Gearhead Data</b>												
1 Reduction	3.7 : 1	14 : 1	33 : 1	51 : 1	111 : 1	246 : 1	492 : 1	762 : 1	1181 : 1	1972 : 1	2829 : 1	4380 : 1
2 Reduction absolute	26 <sub>7</sub>	676 <sub>49</sub>	529 <sub>16</sub>	17576 <sub>343</sub>	13824 <sub>125</sub>	421824 <sub>1715</sub>	86112 <sub>175</sub>	19044 <sub>25</sub>	10123776 <sub>8575</sub>	8626176 <sub>4375</sub>	495144 <sub>175</sub>	109503 <sub>25</sub>
3 Max. motor shaft diameter	mm 6	6	3	6	4	4	3	3	4	4	3	3
<b>Order Number</b>	<b>166931</b>	<b>166934</b>		<b>166940</b>	<b>166945</b>	<b>166950</b>	<b>166955</b>	<b>166960</b>	<b>166963</b>	<b>166968</b>	<b>166973</b>	<b>166978</b>
1 Reduction	4.8 : 1	18 : 1		66 : 1	123 : 1	295 : 1	531 : 1	913 : 1	1414 : 1	2189 : 1	3052 : 1	5247 : 1
2 Reduction absolute	24 <sub>5</sub>	624 <sub>35</sub>		16224 <sub>245</sub>	6877 <sub>56</sub>	101062 <sub>343</sub>	331776 <sub>625</sub>	36501 <sub>40</sub>	2425488 <sub>1715</sub>	536406 <sub>245</sub>	1907712 <sub>625</sub>	839523 <sub>160</sub>
3 Max. motor shaft diameter	mm 4	4		4	3	3	4	3	3	3	3	3
<b>Order Number</b>	<b>166932</b>	<b>166935</b>		<b>166941</b>	<b>166946</b>	<b>166951</b>	<b>166956</b>	<b>166961</b>	<b>166964</b>	<b>166969</b>	<b>166974</b>	<b>166979</b>
1 Reduction	5.8 : 1	21 : 1		79 : 1	132 : 1	318 : 1	589 : 1	1093 : 1	1526 : 1	2362 : 1	3389 : 1	6285 : 1
2 Reduction absolute	23 <sub>4</sub>	299 <sub>14</sub>		3887 <sub>49</sub>	3312 <sub>25</sub>	389376 <sub>1225</sub>	20631 <sub>35</sub>	279841 <sub>256</sub>	9345024 <sub>6125</sub>	2066688 <sub>875</sub>	474513 <sub>140</sub>	6436343 <sub>1024</sub>
3 Max. motor shaft diameter	mm 3	3		3	3	4	3	3	4	3	3	3
<b>Order Number</b>		<b>166936</b>		<b>166942</b>	<b>166947</b>	<b>166952</b>	<b>166957</b>		<b>166965</b>	<b>166970</b>	<b>166975</b>	
1 Reduction		23 : 1		86 : 1	159 : 1	411 : 1	636 : 1		1694 : 1	2548 : 1	3656 : 1	
2 Reduction absolute		576 <sub>25</sub>		14976 <sub>175</sub>	1587 <sub>10</sub>	359424 <sub>875</sub>	79488 <sub>125</sub>		1162213 <sub>686</sub>	7962624 <sub>3125</sub>	457056 <sub>125</sub>	
3 Max. motor shaft diameter	mm 4	4		4	3	4	3		3	4	3	
<b>Order Number</b>		<b>166937</b>		<b>166943</b>	<b>166948</b>	<b>166953</b>	<b>166958</b>		<b>166966</b>	<b>166971</b>	<b>166976</b>	
1 Reduction		28 : 1		103 : 1	190 : 1	456 : 1	706 : 1		1828 : 1	2623 : 1	4060 : 1	
2 Reduction absolute		138 <sub>5</sub>		3588 <sub>35</sub>	12167 <sub>64</sub>	89401 <sub>196</sub>	158171 <sub>224</sub>		2238912 <sub>1225</sub>	2056223 <sub>784</sub>	363793 <sub>896</sub>	
3 Max. motor shaft diameter	mm 4	3		3	3	3	3		3	3	3	
4 Number of stages	1	2	2	3	3	4	4	4	5	5	5	5
5 Max. continuous torque	Nm 1	3	3	6	6	6	6	6	6	6	6	6
6 Intermittently permissible torque at gear output	Nm 1.25	3.75	3.75	7.5	7.5	7.5	7.5	7.5	7.5	7.5	7.5	7.5
7 Max. efficiency	% 80	75	75	70	70	60	60	60	60	50	50	50
8 Weight	g 118	162	162	194	194	226	226	226	258	258	258	258
9 Average backlash no load	° 0.7	0.8	0.8	1.0	1.0	1.0	1.0	1.0	1.0	1.0	1.0	1.0
10 Mass inertia	gcm <sup>2</sup> 1.5	0.8	0.8	0.7	0.7	0.7	0.7	0.7	0.7	0.7	0.7	0.7
11 Gearhead length L1	mm 26.4	36.3	36.3	43.0	43.0	49.7	49.7	49.7	56.4	56.4	56.4	56.4



## Combination

+ Motor	Page	+ Tacho / Brake	Page	Overall length [mm]	= Motor length + gearhead length + (tacho / brake) + assembly parts									
RE 25, 10 W	77			81.0	90.9	90.9	97.6	97.6	104.3	104.3	111.0	111.0	111.0	111.0
RE 25, 10 W	77	MR	258	92.0	101.9	101.9	108.6	108.6	115.3	115.3	122.0	122.0	122.0	122.0
RE 25, 10 W	77	Enc 22	260	95.1	105.0	105.0	111.7	111.7	118.4	118.4	125.1	125.1	125.1	125.1
RE 25, 10 W	77	HED_ 5540	262/264	101.8	111.7	111.7	118.4	118.4	125.1	125.1	131.8	131.8	131.8	131.8
RE 25, 10 W	77	DCT 22	271	103.3	113.2	113.2	119.9	119.9	126.6	126.6	133.3	133.3	133.3	133.3
RE 25, 20 W	78			69.5	79.4	79.4	86.1	86.1	92.8	92.8	99.5	99.5	99.5	99.5
RE 25, 20 W	79			81.0	90.9	90.9	97.6	97.6	104.3	104.3	111.0	111.0	111.0	111.0
RE 25, 20 W	79	MR	258	92.0	101.9	101.9	108.6	108.6	115.3	115.3	122.0	122.0	122.0	122.0
RE 25, 20 W	79	Enc 22	260	95.1	105.0	105.0	111.7	111.7	118.4	118.4	125.1	125.1	125.1	125.1
RE 25, 20 W	79	HED_ 5540	262/264	101.8	111.7	111.7	118.4	118.4	125.1	125.1	131.8	131.8	131.8	131.8
RE 25, 20 W	79	DCT 22	271	103.3	113.2	113.2	119.9	119.9	126.6	126.6	133.3	133.3	133.3	133.3
RE 25, 20 W	79	HED_ 5540 / AB 28	308	132.2	142.1	142.1	148.8	148.8	155.5	155.5	162.2	162.2	162.2	162.2
RE 26, 18 W	80			85.3	95.2	95.2	101.9	101.9	108.6	108.6	115.3	115.3	115.3	115.3
RE 26, 18 W	80	MR	258	96.3	106.2	106.2	112.9	112.9	119.6	119.6	126.3	126.3	126.3	126.3
RE 26, 18 W	80	Enc 22	260	102.7	112.6	112.6	119.3	119.3	126.0	126.0	132.7	132.7	132.7	132.7
RE 26, 18 W	80	HED_ 5540	262/264	103.7	113.6	113.6	120.3	120.3	127.0	127.0	133.7	133.7	133.7	133.7
RE 26, 18 W	80	DCT 22	271	106.3	116.2	116.2	122.9	122.9	129.6	129.6	136.3	136.3	136.3	136.3
RE 30, 60 W	81			94.5	104.4	104.4	111.1	111.1	117.8	117.8	124.5	124.5	124.5	124.5
RE 30, 60 W	81	MR	259	105.9	115.8	115.8	122.5	122.5	129.2	129.2	135.9	135.9	135.9	135.9
RE 35, 90 W	82			97.4	107.3	107.3	114.0	114.0	120.7	120.7	127.4	127.4	127.4	127.4
RE 35, 90 W	82	MR	259	108.8	118.7	118.7	125.4	125.4	132.1	132.1	138.8	138.8	138.8	138.8
RE 35, 90 W	82	HED_ 5540	262/264	118.4	128.3	128.3	135.0	135.0	141.7	141.7	148.4	148.4	148.4	148.4
RE 35, 90 W	82	DCT 22	271	115.5	125.4	125.4	132.1	132.1	138.8	138.8	145.5	145.5	145.5	145.5
RE 35, 90 W	82	AB 28	308	133.5	143.4	143.4	150.1	150.1	156.8	156.8	163.5	163.5	163.5	163.5
RE 35, 90 W	82	HEDS 5540 / AB 28	262/308	150.6	160.5	160.5	167.2	167.2	173.9	173.9	180.6	180.6	180.6	180.6
RE 36, 70 W	83			97.7	107.6	107.6	114.3	114.3	121.0	121.0	127.7	127.7	127.7	127.7
RE 36, 70 W	83	MR	259	109.1	119.0	119.0	125.7	125.7	132.4	132.4	139.1	139.1	139.1	139.1
RE 36, 70 W	83	HED_ 5540	262/264	118.7	128.6	128.6	135.3	135.3	142.0	142.0	148.7	148.7	148.7	148.7
RE 36, 70 W	83	DCT 22	271	115.8	125.7	125.7	132.4	132.4	139.1	139.1	145.8	145.8	145.8	145.8