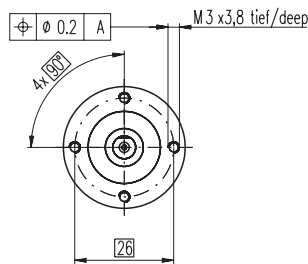
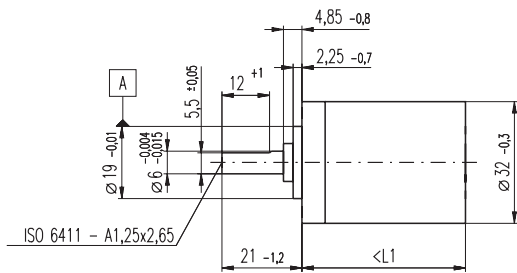


# Planetary Gearhead GP 32 A $\varnothing 32$ mm, 0.75 - 4.5 Nm

Metal Version



M 1:2

## Technical Data

Planetary Gearhead	straight teeth
Output shaft	stainless steel
Shaft diameter as option	8 mm
Bearing at output	ball bearing
Radial play, 5 mm from flange	max. 0.14 mm
Axial play	max. 0.4 mm
Max. radial load, 10 mm from flange	140 N
Max. permissible axial load	120 N
Max. permissible force for press fits	120 N
Sense of rotation, drive to output	=
Recommended input speed	< 6000 rpm
Recommended temperature range	-20 ... +100°C
Extended area as option	-35 ... +100°C

Option: Low-noise version

- Stock program
- Standard program
- Special program (on request)

## Order Number

	166155	166158	166163	166164	166169	166174	166179	166184	166187	166192	166197	166202
<b>Gearhead Data</b>												
1 Reduction	3.7 : 1	14 : 1	33 : 1	51 : 1	111 : 1	246 : 1	492 : 1	762 : 1	1181 : 1	1972 : 1	2829 : 1	4380 : 1
2 Reduction absolute	26/7	676/49	529/16	17576/343	13824/125	421824/1715	86112/175	19044/25	1012376/6575	8626176/4375	495144/175	109503/25
3 Max. motor shaft diameter mm	6	6	3	6	4	4	3	3	4	4	3	3
<b>Order Number</b>	<b>166156</b>	<b>166159</b>		<b>166165</b>	<b>166170</b>	<b>166175</b>	<b>166180</b>	<b>166185</b>	<b>166188</b>	<b>166193</b>	<b>166198</b>	<b>166203</b>
1 Reduction	4.8 : 1	18 : 1		66 : 1	123 : 1	295 : 1	531 : 1	913 : 1	1414 : 1	2189 : 1	3052 : 1	5247 : 1
2 Reduction absolute	24/5	624/35		16224/245	6877/56	101062/343	331776/625	36501/40	2425488/1715	536406/245	1907712/625	839523/160
3 Max. motor shaft diameter mm	4	4		4	3	3	4	3	3	3	3	3
<b>Order Number</b>	<b>166157</b>	<b>166160</b>		<b>166166</b>	<b>166171</b>	<b>166176</b>	<b>166181</b>	<b>166186</b>	<b>166189</b>	<b>166194</b>	<b>166199</b>	<b>166204</b>
1 Reduction	5.8 : 1	21 : 1		79 : 1	132 : 1	318 : 1	589 : 1	1093 : 1	1526 : 1	2362 : 1	3389 : 1	6285 : 1
2 Reduction absolute	23/4	299/14		3887/49	3312/25	389376/1225	20631/35	279841/256	9345024/6125	2066688/375	474513/140	6436343/1024
3 Max. motor shaft diameter mm	3	3		3	3	4	3	3	4	3	3	3
<b>Order Number</b>		<b>166161</b>		<b>166167</b>	<b>166172</b>	<b>166177</b>	<b>166182</b>		<b>166190</b>	<b>166195</b>	<b>166200</b>	
1 Reduction		23 : 1		86 : 1	159 : 1	411 : 1	636 : 1		1694 : 1	2548 : 1	3656 : 1	
2 Reduction absolute		576/25		14976/175	1587/10	359424/875	79488/125		1162213/686	7962624/3125	457056/125	
3 Max. motor shaft diameter mm		4		4	3	4	3		3	4	3	
<b>Order Number</b>		<b>166162</b>		<b>166168</b>	<b>166173</b>	<b>166178</b>	<b>166183</b>		<b>166191</b>	<b>166196</b>	<b>166201</b>	
1 Reduction		28 : 1		103 : 1	190 : 1	456 : 1	706 : 1		1828 : 1	2623 : 1	4060 : 1	
2 Reduction absolute		138/5		3588/35	12167/64	89401/196	158171/224		2238912/1225	2056623/784	3637933/896	
3 Max. motor shaft diameter mm		3		3	3	3	3		3	3	3	
4 Number of stages		1		2	2	3	3		4	4	5	
5 Max. continuous torque Nm		0.75		2.25	2.25	4.50	4.50		4.50	4.50	4.50	
6 Intermittently permissible torque at gear output Nm		1.1		3.4	3.4	6.5	6.5		6.5	6.5	6.5	
7 Max. efficiency %		80		75	75	70	70		60	60	50	
8 Weight g		118		162	162	194	194		226	226	258	
9 Average backlash no load °		0.7		0.8	0.8	1.0	1.0		1.0	1.0	1.0	
10 Mass inertia gcm <sup>2</sup>		1.5		0.8	0.8	0.7	0.7		0.7	0.7	0.7	
11 Gearhead length L1* mm		26.4		36.3	36.3	43.0	43.0		49.7	49.7	56.4	

\* for EC 32 flat is L1 + 2.0 mm



## Combination

+ Motor	Page	+ Tacho / Brake	Page	Overall length [mm] = Motor length + gearhead length + (tacho / brake) + assembly parts
RE 30, 60 W	81			94.5 104.4 104.4 111.1 111.1 117.8 117.8 117.8 124.5 124.5 124.5 124.5
RE 30, 60 W	81	MR	259	105.9 115.8 115.8 122.5 122.5 129.2 129.2 129.2 135.9 135.9 135.9 135.9
RE 35, 90 W	82			97.4 107.3 107.3 114.0 114.0 120.7 120.7 120.7 127.4 127.4 127.4 127.4
RE 35, 90 W	82	MR	259	108.8 118.7 118.7 125.4 125.4 132.1 132.1 132.1 138.8 138.8 138.8 138.8
RE 35, 90 W	82	HED_5540	262/264	118.4 128.3 128.3 135.0 135.0 141.7 141.7 141.7 148.4 148.4 148.4 148.4
RE 35, 90 W	82	DCT 22	271	115.5 125.4 125.4 132.1 132.1 138.8 138.8 138.8 145.5 145.5 145.5 145.5
RE 35, 90 W	82	AB 28	308	133.5 143.4 143.4 150.1 150.1 156.8 156.8 156.8 163.5 163.5 163.5 163.5
RE 35, 90 W	82	HEDS 5540 / AB 28	262/308	150.6 160.5 160.5 167.2 167.2 173.9 173.9 173.9 180.6 180.6 180.6 180.6
RE 36, 70 W	83			97.7 107.6 107.6 114.3 114.3 121.0 121.0 121.0 127.7 127.7 127.7 127.7
RE 36, 70 W	83	MR	259	109.1 119.0 119.0 125.7 125.7 132.4 132.4 132.4 139.1 139.1 139.1 139.1
RE 36, 70 W	83	HED_5540	262/264	118.7 128.6 128.6 135.3 135.3 142.0 142.0 142.0 148.7 148.7 148.7 148.7
RE 36, 70 W	83	DCT 22	271	115.8 125.7 125.7 132.4 132.4 139.1 139.1 139.1 145.8 145.8 145.8 145.8
A-max 32	123/125			89.4 99.3 99.3 106.0 106.0 112.7 112.7 112.7 119.4 119.4 119.4 119.4
A-max 32	124/126			88.0 97.9 97.9 104.6 104.6 111.3 111.3 111.3 118.0 118.0 118.0 118.0
A-max 32	124/126 MR		259	99.2 109.1 109.1 115.8 115.8 122.5 122.5 122.5 129.2 129.2 129.2 129.2
A-max 32	124/126 HED_5540		262/264	108.8 118.7 118.7 125.4 125.4 132.1 132.1 132.1 138.8 138.8 138.8 138.8
EC 32, 80 W	164			86.5 96.4 96.4 103.1 103.1 109.8 109.8 109.8 116.5 116.5 116.5 116.5
EC 32, 80 W	164	HED_5540	263/265	104.9 114.8 114.8 121.5 121.5 128.2 128.2 128.2 134.9 134.9 134.9 134.9
EC 32, 80 W	164	Res 26	272	106.6 116.5 116.5 123.2 123.2 129.9 129.9 129.9 136.6 136.6 136.6 136.6
EC 32 flat, 15 W	197			44.4 54.3 54.3 61.0 61.0 67.7 67.7 67.7 74.4 74.4 74.4 74.4
EC 32 flat, IE, IP 00	198			54.5 64.4 64.4 71.1 71.1 77.8 77.8 77.8 84.5 84.5 84.5 84.5
EC 32 flat, IE, IP 40	198			56.2 66.1 66.1 72.8 72.8 79.5 79.5 79.5 86.2 86.2 86.2 86.2