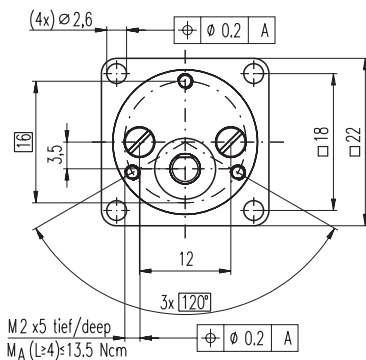
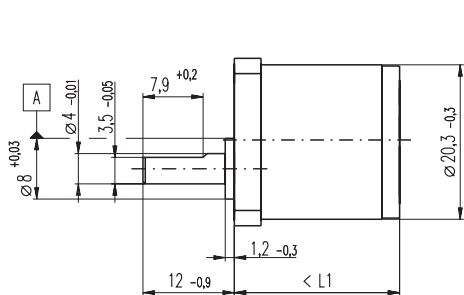


Spur Gearhead GS 20 A $\varnothing 20.3$ mm, 0.06 - 0.25 Nm



Technical Data

Spur Gearhead	straight teeth
Output shaft	stainless steel, hardened
Bearing at output	sleeve bearing
Radial play, 6 mm from flange	< 0.1 mm
Axial play	< 0.3 mm
Max. permissible axial load	8 N
Max. permissible force for press fits	20 N
Recommended input speed	< 8000 rpm
Recommended temperature range	-15 ... +80°C
Extended area as option	-35 ... +80°C
Number of stages	2 3 4 5 6
Max. radial load, 6 mm from flange	8 N 12 N 16 N 20 N 20 N

M 1:1

- Stock program
- Standard program
- Special program (on request)

Order Number

258042	258044	258045	258047	258049
--------	--------	--------	--------	--------

Gearhead Data (provisional)

	15 : 1	36 : 1	88 : 1	216 : 1	532 : 1
1 Reduction	15 : 1	36 : 1	88 : 1	216 : 1	532 : 1
2 Reduction absolute	1696/117	54272/1521	1736704/19773	55574528/257049	1778384896/3341637
3 Max. motor shaft diameter mm	2	2	2	2	2
4 Number of stages	2	3	4	5	6
5 Max. continuous torque Nm	0.06	0.08	0.15	0.20	0.25
6 Intermittently permissible torque at gear output Nm	0.07	0.09	0.18	0.25	0.30
7 Sense of rotation, drive to output	≠	=	≠	=	≠
8 Max. efficiency %	91	83	75	69	62
9 Weight g	11.8	13.0	14.3	15.6	16.8
10 Average backlash no load °	1.6	2.0	2.4	2.8	3.2
11 Mass inertia gcm ²	0.016	0.015	0.015	0.015	0.015
11 Gearhead length L1* mm	19.6	21.8	24.1	26.3	28.6

* for EC 20 flat is L1 + 4.0 mm



Combination

+ Motor	Page	+ Tacho / Brake	Page	Overall length [mm] = Motor length + gearhead length + (tacho / brake) + assembly parts				
A-max 19	107/108			48.6	50.8	53.1	55.3	57.6
A-max 19, 1.5 W	108	MR	255/256	53.7	55.9	58.2	60.4	62.7
A-max 19, 1.5 W	108	Enc 22	261	63.0	65.2	67.5	69.7	72.0
A-max 19, 1.5 W	108	MEnc 13	270	56.1	58.3	60.6	62.8	65.1
A-max 19, 2.5 W	109/110			51.2	53.4	55.7	57.9	60.2
A-max 19, 2.5 W	110	MR	255/256	55.5	57.7	60.0	62.2	64.5
A-max 19, 2.5 W	110	Enc 22	261	65.6	67.8	70.1	72.3	74.6
A-max 19, 2.5 W	110	MEnc 13	270	58.7	60.9	63.2	65.4	67.7
EC 20 flat, 3 W, A	192			34.1	36.3	38.6	40.8	43.1
EC 20 flat, 3 W, B	192			33.5	35.7	38.0	40.2	42.5
EC 20 flat, 5 W	193			37.6	39.8	42.1	44.3	46.6
EC 20 flat, IE, IP 00	194			40.7	42.9	45.2	47.4	49.7
EC 20 flat, IE, IP 40	194			41.8	44.0	46.3	48.5	50.8
EC 20 flat, IE, IP 00	195			44.7	46.9	49.2	51.4	53.7
EC 20 flat, IE, IP 40	195			45.8	48.0	50.3	52.5	54.8