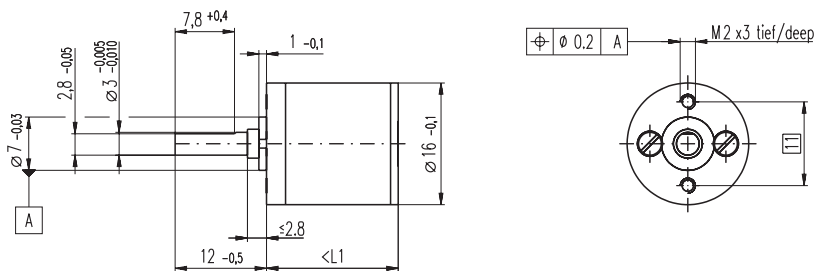


Spur Gearhead GS 16 VZ $\varnothing 16$ mm, 0.06 - 0.1 Nm

Low Backlash

NEW

maxon gear



M 1:1

Technical Data

Spur Gearhead	straight teeth
Output shaft	stainless steel, hardened
Bearing at output	preloaded ball bearings
Radial play, 6.5 mm from flange	max. 0.02 mm
Axial play at axial load	< 5 N 0 mm > 5 N max. 0.05 mm
Max. radial load, 6.5 mm from flange	25 N
Max. permissible axial load	5 N
Max. permissible force for press fits	5 N
Recommended input speed	< 8000 rpm
Recommended temperature range	-15 ... +100°C
Extended area as option	-35 ... +100°C

- Stock program
- Standard program
- Special program (on request)

Order Number

	321201	327789	327796	327800
Gearhead Data				
1 Reduction	22 : 1	76 : 1	261 : 1	900 : 1
2 Reduction absolute	12493/567	387283/5103	12005773/45927	372178963/413343
3 Max. motor shaft diameter mm	1.5	1.5	1.5	1.5
Order Number	327787	327788	327797	327801
1 Reduction	31 : 1	108 : 1	371 : 1	1278 : 1
2 Reduction absolute	27869/891	863939/8019	26782109/72171	830245379/649539
3 Max. motor shaft diameter mm	1.5	1.5	1.5	1.5
Order Number	325066	327790	327799	327802
1 Reduction	41 : 1	141 : 1	485 : 1	1670 : 1
2 Reduction absolute	29791/729	923521/6561	28629151/59049	887503681/531441
3 Max. motor shaft diameter mm	1	1	1	1
4 Number of stages	3	4	5	6
5 Max. continuous torque Nm	0.06	0.10	0.10	0.10
6 Intermittently permissible torque at gear output Nm	0.15	0.30	0.30	0.30
7 Sense of rotation, drive to output	≠	=	≠	=
8 Max. efficiency %	69	62	54	48
9 Weight g	15.7	17.2	18.7	20.2
10 Average backlash no load °	≤ 0.25	≤ 0.3	≤ 0.45	≤ 0.5
11 Mass inertia gcm ²	0.02	0.017	0.014	0.013
12 Gearhead length L1 mm	17.3	19.3	21.3	23.3



Combination

+ Motor	Page	+ Tacho / Brake	Page	Overall length [mm] = Motor length + gearhead length + (tacho / brake) + assembly parts			
A 2516, 0.8 W	88			34.8	36.8	38.8	40.8
A 2516, 0.8 W	88	MEnc 13	270	42.1	44.1	46.1	48.1
A-max 16	103-106			42.8	44.8	46.8	48.8
A-max 16	104/106	MR	255/256	47.8	49.8	51.8	53.8
A-max 16	104/106	MEnc 13	270	50.9	52.9	54.9	56.9