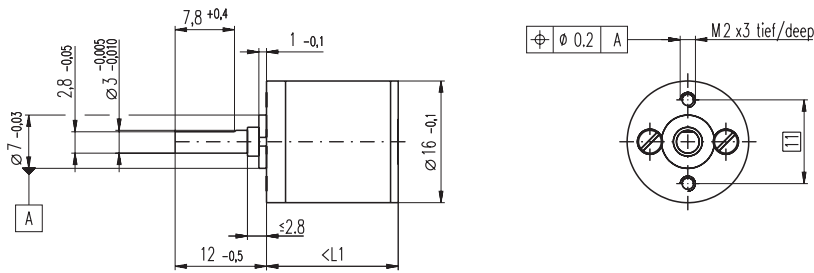


# Spur Gearhead GS 16 V $\varnothing 16$ mm, 0.06 - 0.1 Nm



M 1:1

## Technical Data

Spur Gearhead	straight teeth
Output shaft	stainless steel, hardened
Bearing at output	preloaded ball bearings
Radial play, 6.5 mm from flange	max. 0.02 mm
Axial play at axial load	< 5 N 0 mm > 5 N max. 0.05 mm
Max. radial load, 6.5 mm from flange	25 N
Max. permissible axial load	5 N
Max. permissible force for press fits	5 N
Recommended input speed	< 8000 rpm
Recommended temperature range	-15 ... +100°C
Extended area as option	-35 ... +100°C

- Stock program
- Standard program
- Special program (on request)

## Order Number

Gearhead Data	Order Number						
	235066	235070	235073	235076	235079	235082	
1 Reduction	6.4 : 1	22 : 1	76 : 1	261 : 1	900 : 1	3101 : 1	
2 Reduction absolute	403/63	12493/567	387283/5103	12005773/45927	372178963/413343	11537547853/3720067	
3 Max. motor shaft diameter	mm 1.5	1.5	1.5	1.5	1.5	1.5	
<b>Order Number</b>	<b>235068</b>	<b>235071</b>	<b>235074</b>	<b>235077</b>	<b>235080</b>	<b>235083</b>	
1 Reduction	9.1 : 1	31 : 1	108 : 1	371 : 1	1278 : 1	4402 : 1	
2 Reduction absolute	899/99	27869/891	863939/8019	26782109/72171	830245379/649539	25737606748/5845851	
3 Max. motor shaft diameter	mm 1.5	1.5	1.5	1.5	1.5	1.5	
<b>Order Number</b>	<b>235069</b>	<b>235072</b>	<b>235075</b>	<b>235078</b>	<b>235081</b>	<b>235084</b>	
1 Reduction	12 : 1	41 : 1	141 : 1	485 : 1	1670 : 1	5752 : 1	
2 Reduction absolute	961/81	29791/729	923521/6561	28629151/59049	887503681/531441	27512614111/4782969	
3 Max. motor shaft diameter	mm 1	1	1	1	1	1	
4 Number of stages	2	3	4	5	6	7	
5 Max. continuous torque	Nm 0.06	0.06	0.10	0.10	0.10	0.10	
6 Intermittently permissible torque at gear output	Nm 0.15	0.15	0.30	0.30	0.30	0.30	
7 Sense of rotation, drive to output	=	≠	=	≠	=	≠	
8 Max. efficiency	% 81	73	66	59	53	48	
9 Weight	g 13.8	14.5	15.8	17.0	17.9	18.5	
10 Average backlash no load	° 1.0	1.0	1.2	1.2	1.5	1.5	
11 Mass inertia	gcm <sup>2</sup> 0.0057	0.0052	0.0035	0.0032	0.0032	0.0032	
12 Gearhead length L1	mm 14.3	17.3	19.3	21.3	23.3	25.3	



## Combination

+ Motor	Page	+ Tacho / Brake	Page	Overall length [mm] = Motor length + gearhead length + (tacho / brake) + assembly parts					
A 2516, 0.8 W	88			31.8	34.8	36.8	38.8	40.8	42.8
A 2516, 0.8 W	88	MEnc 13	270	39.1	42.1	44.1	46.1	48.1	50.1
A-max 16	103-106			39.8	42.8	44.8	46.8	48.8	50.8
A-max 16	104/106	MR	255/256	44.8	47.8	49.8	51.8	53.8	55.8
A-max 16	104/106	MEnc 13	270	47.9	50.9	52.9	54.9	56.9	58.9