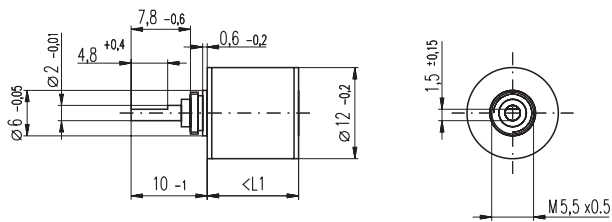


Spur Gearhead GS 12 A $\varnothing 12$ mm, 0.008 - 0.025 Nm

maxon gear



M 1:1

Technical Data

Spur Gearhead	straight teeth
Output shaft	stainless steel, hardened
Bearing at output	sleeve bearing
Radial play, 6.5 mm from flange	0.05 mm
Axial play	0.02 - 0.12 mm
Max. radial load, 6.5 mm from flange	1.5 N
Max. permissible axial load	2 N
Max. permissible force for press fits	10 N
Recommended input speed	< 8000 rpm
Recommended temperature range	-15 ... +100°C
Extended area as option	-35 ... +100°C

- Stock program
- Standard program
- Special program (on request)

Order Number

Gearhead Data	Order Number							
	310301	313872	313990	313991	310311	313993	310316	
1 Reduction	6.4:1	13:1	58:1	141:1	371:1	485:1	3101:1	
2 Reduction absolute	403/63	21866/1694	724594/12474	20138716/142884	26782109/72171	624300196/1285956	11535969787/372008	
3 Max. motor shaft diameter	mm 1.2	1.0	1.0	1.2	1.0	1.2	1.2	
Order Number	310302	310304	310307	313992		310313	310317	
1 Reduction	9.1:1	22:1	76:1	200:1		900:1	4402:1	
2 Reduction absolute	899/99	12493/567	387283/5103	22462414/112266		372178963/413342	25733436102/584585	
3 Max. motor shaft diameter	mm 1.0	1.2	1.2	1.2		1.2	1.0	
Order Number		310305	310308	310310		310314		
1 Reduction		31:1	108:1	261:1		1278:1		
2 Reduction absolute		27869/891	863939/8019	1200573/45927		830245379/649539		
3 Max. motor shaft diameter	mm	1.0	1.0	1.2		1.0		
4 Number of stages	2	3	4	5	5	6	7	
5 Max. continuous torque	Nm 0.008	0.010	0.015	0.020	0.020	0.025	0.025	
6 Intermittently permissible torque at gear output	Nm 0.025	0.030	0.035	0.040	0.040	0.040	0.040	
7 Sense of rotation, drive to output	=	≠	=	≠	≠	=	≠	
8 Max. efficiency	% 81	73	66	59	59	53	48	
9 Weight	g 6.5	7.4	8.3	9.2	9.2	10.1	11	
10 Average backlash no load	° 1	1	1.2	1.2	1.2	1.2	1.5	
11 Mass inertia	gcm ² 0.002	0.002	0.002	0.002	0.002	0.002	0.002	
12 Gearhead length	mm 10	12	14	16	16	18	20	



+ Motor		+ Tacho / Brake		Overall length [mm] = Motor length + gearhead length + (tacho / brake) + assembly parts						
A-max 12	Page 101/102			31.3	33.3	35.3	37.3	37.3	39.3	41.3
A-max 12, 0.5 W	102	MR	252/253	35.2	37.2	39.2	41.2	41.2	43.2	45.2