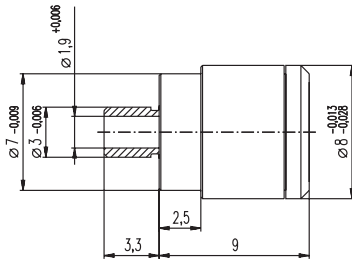


Micro Harmonic Drive® MHD 8 $\varnothing 8$ mm, 0.006 Nm

Play-free micro gearhead



M 2:1

Technical Data

Play-free micro gearhead	
Output shaft	stainless steel
Bearing at output	ball bearing
Max. radial load, 5 mm from flange (static)	15 N
Max. radial load, 5 mm from flange (dynamic)	3 N
Max. permissible axial load	10 N
Max. permissible force for press fits	10 N
Sense of rotation, drive to output	≠
Recommended input speed	< 10 000 rpm
Max. motor speed	30 000 rpm
Repeating accuracy	± 10 arcsec

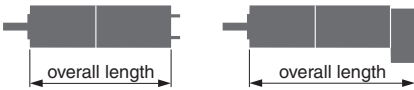
- Stock program
- Standard program
- Special program (on request)

Order Number

311038

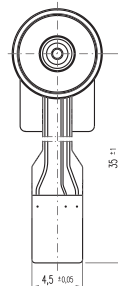
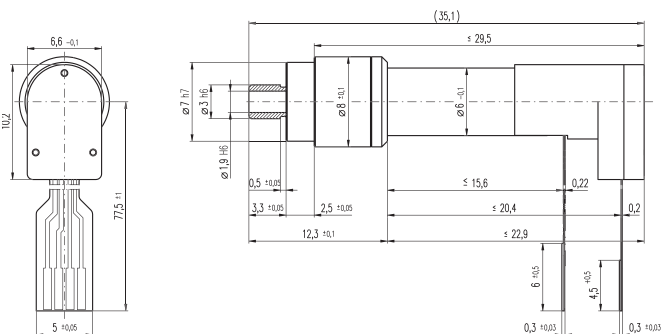
Gearhead Data (provisional)

1 Reduction		160 : 1
2 Max. motor shaft diameter	mm	1.5
3 Number of stages		1
4 Nominal torque	Nm	0.003
5 Max. continuous torque	Nm	0.006
6 Intermittently permissible torque at gear output	Nm	0.020
7 Max. efficiency	%	63
8 Torque loss	μ Nm	70
9 Torsional rigidity	Nm / rad	2.29
10 Weight	g	2.2
11 Mass inertia	gcm ²	0.0007
12 Gearhead length L1	mm	9



Combination

+ Motor	Page	+ Tacho / Brake	Page	Overall length [mm] = Motor length + gearhead length + (tacho / brake) + assembly parts
EC 6, 1.2 W	152			28
EC 6, 1.2 W	152	MR	254	32



Positioning Drive Unit

- Brushless maxon EC motor EC 6 with assigned power rating 1.2 Watt
- Micro Harmonic Drive® gearhead with 3 mNm output torque
- 2-channel 100 pulse Encoder MR (Magneto-Resistance)
- Precise: 100 encoder pulses produce a play-free operating angle of 0.0225 degrees at a 160:1 gearhead reduction ratio
- Hollow shaft with bore diameter 0.65mm for a wide range of application possibilities, e.g. air, vacuum, light

M 1.5:1