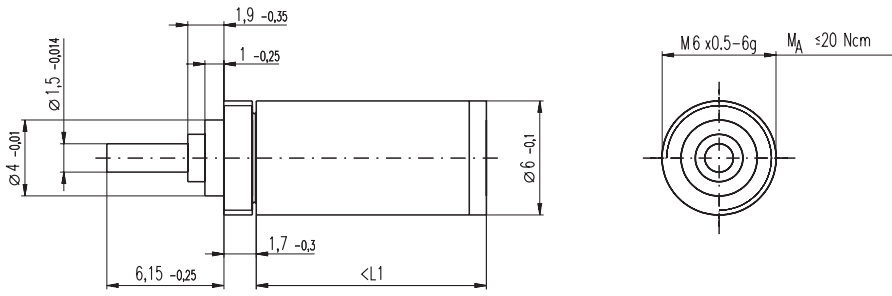


Planetary Gearhead GP 6 A $\varnothing 6$ mm, 0.002 - 0.03 Nm



- Stock program
- Standard program
- Special program (on request)

M 2.5:1

Technical Data

Planetary Gearhead	straight teeth
Output shaft	stainless steel
Bearing at output	ball bearing
Option	sleeve bearing
Radial play, 5 mm from flange	max. 0.12 mm
Axial play	0.02 - 0.10 mm
Max. radial load, 5 mm from flange	5 N
Max. permissible axial load	5 N
Max. permissible force for press fits	10 N
Sense of rotation, drive to output	=
Recommended input speed	< 40 000 rpm
Recommended temperature range	-15 ... +100°C
Extended area as option	-35 ... +100°C

Option: sterilisable version, rust-proof version

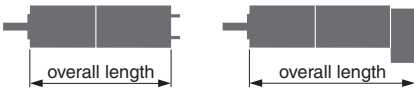
Order Number

in combination with EC 6
in combination with RE 6

199687	199688	199689	199690	199691	304178	304179	304180	304181	304182
--------	--------	--------	--------	--------	--------	--------	--------	--------	--------

Gearhead Data

		3.9 : 1	15 : 1	57 : 1	221 : 1	854 : 1	3.9 : 1	15 : 1	57 : 1	221 : 1	854 : 1
1 Reduction		3.9 : 1	15 : 1	57 : 1	221 : 1	854 : 1	3.9 : 1	15 : 1	57 : 1	221 : 1	854 : 1
2 Reduction absolute		$\frac{27}{7}$	$\frac{729}{49}$	$\frac{19683}{343}$	$\frac{531441}{2401}$	$\frac{14348907}{16807}$	$\frac{27}{7}$	$\frac{729}{49}$	$\frac{19683}{343}$	$\frac{531441}{2401}$	$\frac{14348907}{16807}$
3 Max. motor shaft diameter	mm	1	1	1	1	1	1	1	1	1	1
4 Number of stages		1	2	3	4	5	1	2	3	4	5
5 Max. continuous torque	Nm	0.002	0.005	0.010	0.030	0.030	0.002	0.005	0.010	0.030	0.030
6 Intermittently permissible torque at gear output	Nm	0.005	0.010	0.020	0.060	0.060	0.005	0.010	0.020	0.060	0.060
7 Max. efficiency	%	88	77	68	60	52	88	77	68	60	52
8 Weight	g	1.8	2.2	2.6	3.0	3.4	1.7	2.1	2.5	2.9	3.3
9 Average backlash no load	°	1.8	2.0	2.2	2.5	2.8	1.8	2.0	2.2	2.5	2.8
10 Mass inertia	gcm ²	0.001	0.001	0.001	0.001	0.001	0.001	0.001	0.001	0.001	0.001
11 Gearhead length L1	mm	7.0	9.5	12.1	14.7	17.3	6.2	8.7	11.3	13.9	16.5

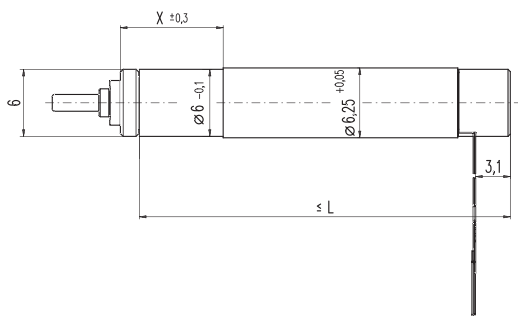


Combination

+ Motor	Page	+ Tacho / Brake	Page	Overall length [mm] = Motor length + gearhead length + (tacho / brake) + assembly parts									
RE 6, 0.3 W	50								21.9	24.4	27.0	29.6	32.2
EC 6, 1.2 W	152			28.1	30.6	33.2	35.8	38.4					
EC 6, 1.2 W	152	MR	254	32.1	34.6	37.2	39.8	42.4					

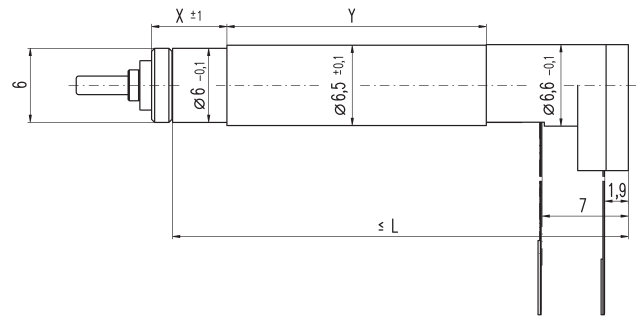
Variant dimensions for the EC 6 combination (including assembly sleeve)

Combinations of EC 6 with GP 6



Reduction	Number of stages	L	X
3.9 : 1	1	28.1	4.2
15 : 1	2	30.6	6.6
57 : 1	3	33.2	9.2
221 : 1	4	35.8	11.8
854 : 1	5	38.4	14.4

Combinations of EC 6 with GP 6 and MR encoder



Reduction	Number of stages	L	X	Y
3.9 : 1	1	32.1	3.6	18
15 : 1	2	34.6	3.1	21
57 : 1	3	37.2	5.7	21
221 : 1	4	39.8	8.3	21
854 : 1	5	42.4	10.9	21