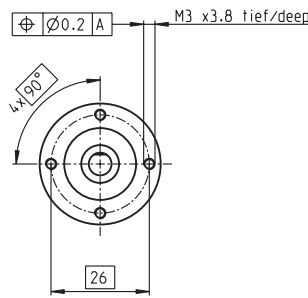
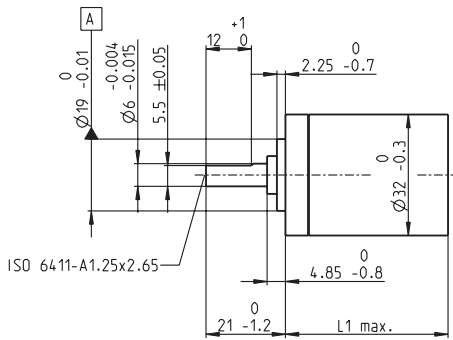


Planetary Gearhead GP 32 A $\varnothing 32$ mm, 0.75 - 4.5 Nm



M 1:2

Technical Data

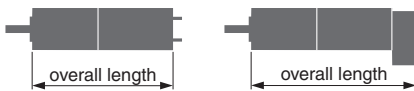
Planetary Gearhead	straight teeth
Output shaft	stainless steel
Shaft diameter as option	8 mm
Bearing at output	ball bearing
Radial play, 5 mm from flange	max. 0.14 mm
Axial play	max. 0.4 mm
Max. radial load, 10 mm from flange	140 N
Max. permissible axial load	120 N
Max. permissible force for press fits	120 N
Sense of rotation, drive to output	=
Recommended input speed	< 6000 rpm
Recommended temperature range	-40 ... +100°C

Option: Low-noise version

- Stock program
- Standard program
- Special program (on request)

Order Number

	166155	166158	166163	166164	166169	166174	166179	166184	166187	166192	166197	166202
Gearhead Data												
1 Reduction	3.7 : 1	14 : 1	33 : 1	51 : 1	111 : 1	246 : 1	492 : 1	762 : 1	1181 : 1	1972 : 1	2829 : 1	4380 : 1
2 Reduction absolute	26/7	676/49	529/16	17576/343	13824/125	421824/1715	86112/175	19044/25	10123776/6575	8626176/4375	495144/175	109503/25
3 Max. motor shaft diameter	mm 6	6	3	6	4	4	3	3	4	4	3	3
Order Number	166156	166159		166165	166170	166175	166180	166185	166188	166193	166198	166203
1 Reduction	4.8 : 1	18 : 1		66 : 1	123 : 1	295 : 1	531 : 1	913 : 1	1414 : 1	2189 : 1	3052 : 1	5247 : 1
2 Reduction absolute	24/5	624/35		16224/245	6877/56	101062/343	331776/625	36501/40	2425488/1715	536406/245	1907712/625	839523/160
3 Max. motor shaft diameter	mm 4	4		4	3	3	4	3	3	3	3	3
Order Number	166157	166160		166166	166171	166176	166181	166186	166189	166194	166199	166204
1 Reduction	5.8 : 1	21 : 1		79 : 1	132 : 1	318 : 1	589 : 1	1093 : 1	1526 : 1	2362 : 1	3389 : 1	6285 : 1
2 Reduction absolute	23/4	299/14		3887/49	3312/25	389376/1225	20631/35	279841/256	9345024/6125	2066688/675	474513/140	6436343/1024
3 Max. motor shaft diameter	mm 3	3		3	3	4	3	3	4	3	3	3
Order Number		166161		166167	166172	166177	166182		166190	166195	166200	
1 Reduction		23 : 1		86 : 1	159 : 1	411 : 1	636 : 1		1694 : 1	2548 : 1	3656 : 1	
2 Reduction absolute		578/25		14976/175	1587/10	359424/875	79488/125		1162213/686	7962624/3125	457056/125	
3 Max. motor shaft diameter	mm	4		4	3	4	3		3	4	3	
Order Number		166162		166168	166173	166178	166183		166191	166196	166201	
1 Reduction		28 : 1		103 : 1	190 : 1	456 : 1	706 : 1		1828 : 1	2623 : 1	4060 : 1	
2 Reduction absolute		138/5		3588/35	12167/64	89401/196	158171/224		2238912/1225	2056223/784	3637933/896	
3 Max. motor shaft diameter	mm	3		3	3	3	3		3	3	3	
4 Number of stages		1	2	2	3	3	4	4	5	5	5	5
5 Max. continuous torque	Nm	0.75	2.25	2.25	4.50	4.50	4.50	4.50	4.50	4.50	4.50	4.50
6 Intermittently permissible torque at gear output	Nm	1.1	3.4	3.4	6.5	6.5	6.5	6.5	6.5	6.5	6.5	6.5
7 Max. efficiency	%	80	75	75	70	70	60	60	60	50	50	50
8 Weight	g	118	162	162	194	194	226	226	226	258	258	258
9 Average backlash no load	°	0.7	0.8	0.8	1.0	1.0	1.0	1.0	1.0	1.0	1.0	1.0
10 Mass inertia	gcm ²	1.5	0.8	0.8	0.7	0.7	0.7	0.7	0.7	0.7	0.7	0.7
11 Gearhead length L1	mm	26.5	36.4	36.4	43.1	43.1	49.8	49.8	49.8	56.5	56.5	56.5



maxon Modular System

+ Motor	Page	+ Sensor / Brake	Page	Overall length [mm] = Motor length + gearhead length + (sensor / brake) + assembly parts											
RE 25	77/79			81.1	91.0	91.0	97.7	97.7	104.4	104.4	104.4	111.1	111.1	111.1	111.1
RE 25	77/79	MR	262	92.1	102.0	102.0	108.7	108.7	115.4	115.4	115.4	122.1	122.1	122.1	122.1
RE 25	77/79	Enc 22	264	95.2	105.1	105.1	111.8	111.8	118.5	118.5	118.5	125.2	125.2	125.2	125.2
RE 25	77/79	HED_ 5540	266/268	101.9	111.8	111.8	118.5	118.5	125.2	125.2	125.2	131.9	131.9	131.9	131.9
RE 25	77/79	DCT 22	276	103.4	113.3	113.3	120.0	120.0	126.7	126.7	126.7	133.4	133.4	133.4	133.4
RE 25, 20 W	78			69.6	79.5	79.5	86.2	86.2	92.9	92.9	92.9	99.6	99.6	99.6	99.6
RE 25, 20 W	78	MR	262	80.6	90.5	90.5	97.2	97.2	103.9	103.9	103.9	110.6	110.6	110.6	110.6
RE 25, 20 W	78	HED_ 5540	267/270	90.4	100.3	100.3	107.0	107.0	113.7	113.7	113.7	120.4	120.4	120.4	120.4
RE 25, 20 W	78	DCT22	276	91.9	101.8	101.8	108.5	108.5	115.2	115.2	115.2	121.9	121.9	121.9	121.9
RE 25, 20 W	78	AB 28	318	103.7	113.6	113.6	120.3	120.3	127.0	127.0	127.0	133.7	133.7	133.7	133.7
RE 25, 20 W	78	HED_ 5540 / AB 28	267/318	120.9	130.8	130.8	137.5	137.5	144.2	144.2	144.2	150.9	150.9	150.9	150.9
RE 25, 20 W	79	AB 28	318	115.2	125.1	125.1	131.8	131.8	138.5	138.5	138.5	145.2	145.2	145.2	145.2
RE 25, 20 W	79	HED_ 5540/AB 28	266/318	132.3	142.2	142.2	148.9	148.9	155.6	155.6	155.6	162.3	162.3	162.3	162.3
A-max 26	101-108			71.3	81.2	81.2	87.9	87.9	94.6	94.6	94.6	101.3	101.3	101.3	101.3
A-max 26	102-108	MEnc 13	275	78.4	88.3	88.3	95.0	95.0	101.7	101.7	101.7	108.4	108.4	108.4	108.4
A-max 26	102-108	MR	262	80.1	90.0	90.0	96.7	96.7	103.4	103.4	103.4	110.1	110.1	110.1	110.1
A-max 26	102-108	Enc 22	265	85.7	95.6	95.6	102.3	102.3	109.0	109.0	109.0	115.7	115.7	115.7	115.7
A-max 26	102-108	HED_ 5540	267/269	90.1	100.0	100.0	106.7	106.7	113.4	113.4	113.4	120.1	120.1	120.1	120.1
RE-max 29	131-134			71.3	81.2	81.2	87.9	87.9	94.6	94.6	94.6	101.3	101.3	101.3	101.3
RE-max 29	132/134	MR	262	80.1	90.0	90.0	96.7	96.7	103.4	103.4	103.4	110.1	110.1	110.1	110.1