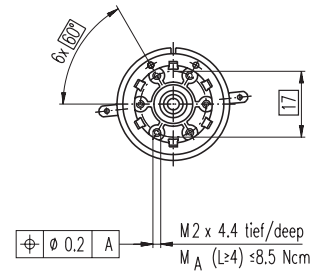
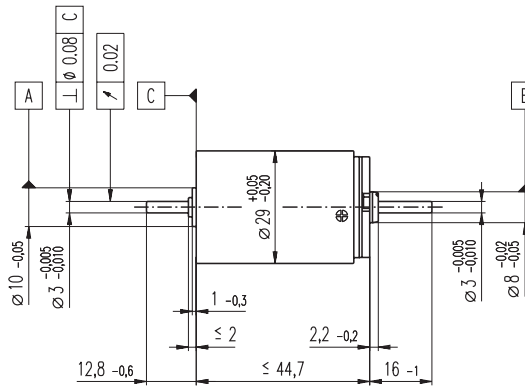
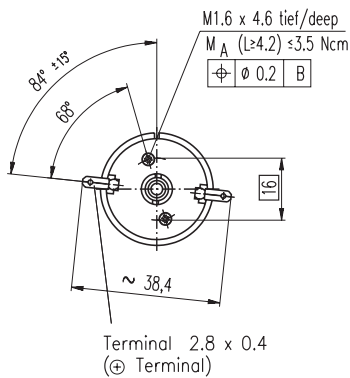


RE-max 29 Ø29 mm, Graphite Brushes, 22 Watt



M 1:2

- Stock program
- Standard program
- Special program (on request)

Order Number

226801	226802	226805	226806	226807	226808	226809	226810	226811	226815	226816	226817	226818	226819	226820
--------	--------	--------	--------	--------	--------	--------	--------	--------	--------	--------	--------	--------	--------	--------

Motor Data

		226801	226802	226805	226806	226807	226808	226809	226810	226811	226815	226816	226817	226818	226819	226820	
Values at nominal voltage																	
1	Nominal voltage	V	9.0	12.0	18.0	24.0	30.0	36.0	42.0	48.0	48.0	48.0	48.0	48.0	48.0	48.0	
2	No load speed	rpm	7640	9130	8900	8790	9090	8670	8380	8600	7450	6100	5240	4860	4030	3250	2700
3	No load current	mA	73.1	69.1	44.0	32.3	27.0	21.0	17.2	15.6	12.9	9.93	8.20	7.47	5.95	4.61	3.73
4	Nominal speed	rpm	6690	8170	7760	7680	8020	7630	7350	7580	6380	5050	4200	3810	2970	2180	1610
5	Nominal torque (max. continuous torque)	mNm	11.0	12.4	19.7	26.9	27.5	28.7	29.2	28.3	29.9	30.4	30.5	30.4	30.5	30.3	
6	Nominal current (max. continuous current)	A	1.08	1.08	1.08	1.08	0.907	0.748	0.627	0.565	0.476	0.410	0.357	0.333	0.275	0.222	0.184
7	Stall torque	mNm	171	207	202	262	273	268	257	265	208	182	157	146	118	94.1	76.5
8	Starting current	A	15.8	16.9	10.6	10.2	8.73	6.80	5.41	4.99	3.40	2.43	1.81	1.56	1.04	0.672	0.455
9	Max. efficiency	%	79	82	85	87	88	88	88	88	87	87	87	86	85	84	83
Characteristics																	
10	Terminal resistance	Ω	0.571	0.708	1.69	2.36	3.44	5.29	7.76	9.61	14.1	19.7	26.5	30.8	46.1	71.4	106
11	Terminal inductance	mH	0.0345	0.0437	0.106	0.195	0.285	0.454	0.661	0.820	1.09	1.63	2.21	2.57	3.72	5.73	8.27
12	Torque constant	mNm / A	10.9	12.2	19.0	25.8	31.2	39.4	47.5	53.0	61.1	74.7	86.9	93.7	113	140	168
13	Speed constant	rpm / V	879	781	502	370	306	242	201	180	156	128	110	102	84.6	68.2	56.8
14	Speed / torque gradient	rpm / mNm	46.2	45.3	44.7	33.9	33.6	32.6	32.8	32.7	36.1	33.8	33.5	33.5	34.5	34.8	35.6
15	Mechanical time constant	ms	6.94	6.08	5.10	4.78	4.63	4.52	4.46	4.43	4.44	4.41	4.39	4.38	4.39	4.39	4.39
16	Rotor inertia	gcm ²	14.3	12.8	10.9	13.5	13.2	13.2	13.0	12.9	11.7	12.5	12.5	12.5	12.1	12.0	11.7

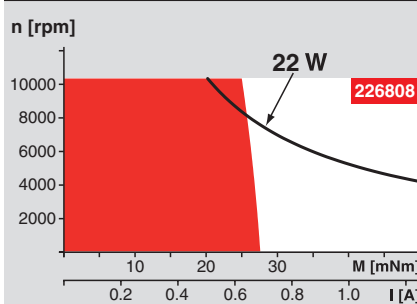
Specifications

- Thermal data**
- 17 Thermal resistance housing-ambient 15.8 K / W
 - 18 Thermal resistance winding-housing 4.0 K / W
 - 19 Thermal time constant winding 15.8 s
 - 20 Thermal time constant motor 1270 s
 - 21 Ambient temperature -30 ... +85°C
 - 22 Max. permissible winding temperature +125°C
- Mechanical data (ball bearings)**
- 23 Max. permissible speed 10400 rpm
 - 24 Axial play 0.1 - 0.2 mm
 - 25 Radial play 0.025 mm
 - 26 Max. axial load (dynamic) 5.0 N
 - 27 Max. force for press fits (static) (static, shaft supported) 75 N / 440 N
 - 28 Max. radial loading, 5 mm from flange 20.5 N
- Mechanical data (sleeve bearings)**
- 23 Max. permissible speed 10400 rpm
 - 24 Axial play 0.1 - 0.2 mm
 - 25 Radial play 0.025 mm
 - 26 Max. axial load (dynamic) 1.7 N
 - 27 Max. force for press fits (static) (static, shaft supported) 80 N / 440 N
 - 28 Max. radial loading, 5 mm from flange 5.5 N
- Other specifications**
- 29 Number of pole pairs 1
 - 30 Number of commutator segments 13
 - 31 Weight of motor 161 g

Values listed in the table are nominal.
 Explanation of the figures on page 49.

Option
 Sleeve bearings in place of ball bearings
 Pigtailed in place of terminals

Operating Range



Comments

- Continuous operation**
 In observation of above listed thermal resistance (lines 17 and 18) the maximum permissible winding temperature will be reached during continuous operation at 25°C ambient.
 = Thermal limit.
- Short term operation**
 The motor may be briefly overloaded (recurring).
- Assigned power rating**

maxon Modular System

Planetary Gearhead
 Ø26 mm
 0.5 - 2.0 Nm
 Page 235

Planetary Gearhead
 Ø32 mm
 0.75 - 4.5 Nm
 Page 238

Planetary Gearhead
 Ø32 mm
 1.0 - 6.0 Nm
 Page 241

Encoder MR
 128 - 1000 CPT,
 3 channels
 Page 258

Recommended Electronics:

LSC 30/2	Page 276
ADS 50/5	276
ADS_E 50/5	277
EPOS 24/5	294
EPOS2 50/5	295
EPOS P 24/5	297

Notes 18