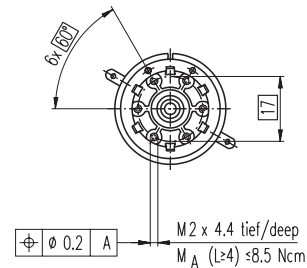
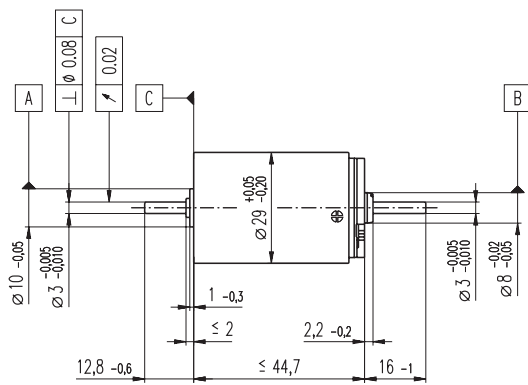
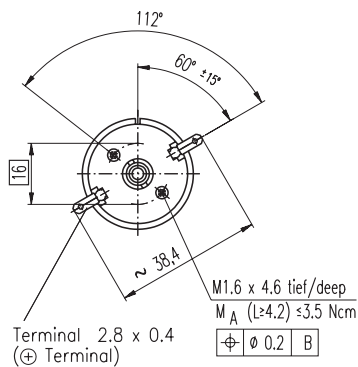


RE-max 29 Ø29 mm, Precious Metal Brushes CLL, 9 Watt



M 1:2

- Stock program
- Standard program
- Special program (on request)

Order Number

226765	226767	226770	226771	226772	226773	226774	226775	226776	226778	226779	226780	226781	226782	226783
--------	--------	--------	--------	--------	--------	--------	--------	--------	--------	--------	--------	--------	--------	--------

Motor Data																	
Values at nominal voltage																	
1	Nominal voltage	V	4.5	6.0	9.0	12.0	15.0	18.0	24.0	24.0	30.0	36.0	36.0	42.0	48.0	48.0	48.0
2	No load speed	rpm	4040	4790	4620	4540	4690	4460	4930	4420	4790	4710	4040	4380	4150	3350	2780
3	No load current	mA	41.1	40.4	25.4	18.5	15.6	12.0	10.6	8.88	8.07	6.53	5.13	4.98	4.02	2.87	2.18
4	Nominal speed	rpm	3760	4450	4010	3880	3870	3620	4080	3570	3890	3830	3170	3500	3260	2450	1870
5	Nominal torque (max. continuous torque)	mNm	8.48	9.55	15.1	20.7	25.2	26.2	25.9	25.9	24.5	25.3	25.5	25.4	25.0	25.0	24.8
6	Nominal current (max. continuous current)	A	0.840	0.840	0.840	0.840	0.840	0.693	0.568	0.510	0.418	0.353	0.305	0.282	0.231	0.186	0.153
7	Stall torque	mNm	122	133	114	142	144	139	150	134	131	137	118	127	117	93.3	75.6
8	Starting current	A	11.5	11.2	6.16	5.66	4.73	3.61	3.24	2.60	2.20	1.88	1.39	1.39	1.06	0.683	0.461
9	Max. efficiency	%	89	89	88	89	89	89	89	89	88	89	88	89	88	88	87
Characteristics																	
10	Terminal resistance	Ω	0.390	0.536	1.46	2.12	3.17	4.99	7.41	9.24	13.7	19.2	25.8	30.1	45.1	70.2	104
11	Terminal inductance	mH	0.0353	0.0447	0.108	0.199	0.292	0.464	0.676	0.839	1.12	1.67	2.26	2.63	3.81	5.86	8.46
12	Torque constant	mNm / A	10.6	11.9	18.5	25.2	30.4	38.4	46.3	51.6	59.6	72.8	84.7	91.3	110	136	164
13	Speed constant	rpm / V	902	802	515	380	314	249	206	185	160	131	113	105	86.8	70	58.2
14	Speed / torque gradient	rpm / mNm	33.2	36.1	40.6	32.0	32.7	32.3	32.9	33.1	36.8	34.5	34.4	34.5	35.6	36.0	37.0
15	Mechanical time constant	ms	4.99	4.85	4.63	4.52	4.50	4.48	4.48	4.48	4.52	4.51	4.51	4.50	4.53	4.54	4.55
16	Rotor inertia	gcm ²	14.3	12.8	10.9	13.5	13.2	13.3	13.0	12.9	11.7	12.5	12.5	12.5	12.1	12.0	11.7

Specifications

- Thermal data**
- 17 Thermal resistance housing-ambient 15.8 K / W
 - 18 Thermal resistance winding-housing 4.0 K / W
 - 19 Thermal time constant winding 15.8 s
 - 20 Thermal time constant motor 1270 s
 - 21 Ambient temperature -30 ... +65°C
 - 22 Max. permissible winding temperature +85°C

- Mechanical data (sleeve bearings)**
- 23 Max. permissible speed 6700 rpm
 - 24 Axial play 0.1 - 0.2 mm
 - 25 Radial play 0.012 mm
 - 26 Max. axial load (dynamic) 1.7 N
 - 27 Max. force for press fits (static) 80 N
 - (static, shaft supported) 1200 N
 - 28 Max. radial loading, 5 mm from flange 5.5 N

- Mechanical data (ball bearings)**
- 23 Max. permissible speed 6700 rpm
 - 24 Axial play 0.1 - 0.2 mm
 - 25 Radial play 0.025 mm
 - 26 Max. axial load (dynamic) 5.0 N
 - 27 Max. force for press fits (static) 75 N
 - (static, shaft supported) 1200 N
 - 28 Max. radial loading, 5 mm from flange 20.5 N

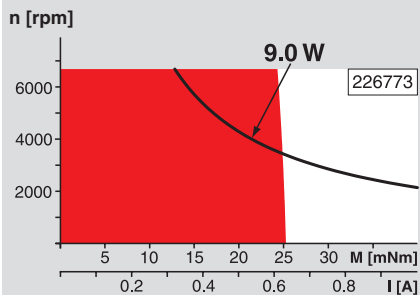
- Other specifications**
- 29 Number of pole pairs 1
 - 30 Number of commutator segments 13
 - 31 Weight of motor 161 g
 - CLL = Capacitor Long Life

Values listed in the table are nominal.
Explanation of the figures on page 49.

Option

- Ball bearings in place of sleeve bearings
- Pigtails in place of terminals
- Without CLL

Operating Range



Comments

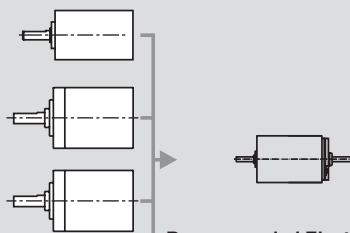
■ **Continuous operation**
In observation of above listed thermal resistance (lines 17 and 18) the maximum permissible winding temperature will be reached during continuous operation at 25°C ambient.
= Thermal limit.

Short term operation
The motor may be briefly overloaded (recurring).

— **Assigned power rating**

maxon Modular System

- Planetary Gearhead**
Ø26 mm
0.5 - 2.0 Nm
Page 235
- Planetary Gearhead**
Ø32 mm
0.75 - 4.5 Nm
Page 238
- Planetary Gearhead**
Ø32 mm
1.0 - 6.0 Nm
Page 241



- Recommended Electronics:**
- LSC 30/2 Page 276
 - EPOS 24/5 294
 - EPOS2 50/5 295
 - EPOS P 24/5 297
 - Notes 18

Overview on page 16 - 21

- Encoder MR**
128 - 1000 CPT,
3 channels
Page 258