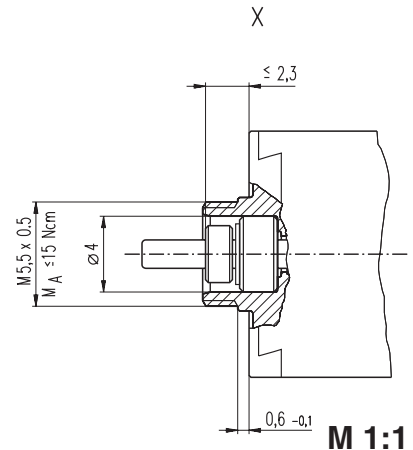
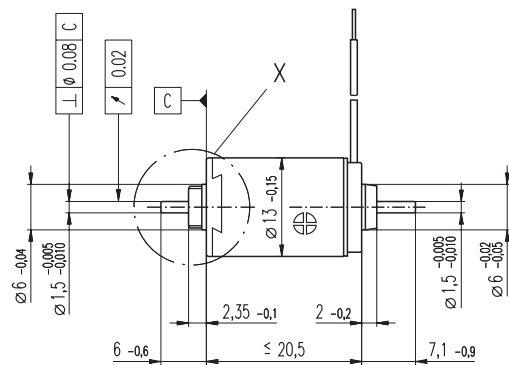
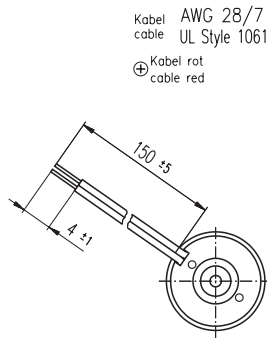


RE-max 13 Ø13 mm, Precious Metal Brushes, 0.75 Watt



- Stock program
- Standard program
- Special program (on request)

Order Number

268336	268337	268338	268339	268340	268341	268342	268343	268344	268345	268346	268347	268348	268349	268350
--------	--------	--------	--------	--------	--------	--------	--------	--------	--------	--------	--------	--------	--------	--------

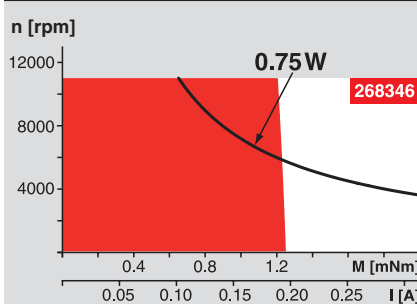
Motor Data

Values at nominal voltage		268336	268337	268338	268339	268340	268341	268342	268343	268344	268345	268346	268347	268348	268349	268350	
1	Nominal voltage	V	0.6	0.72	0.9	1.2	1.5	1.8	1.8	2.4	3.0	3.6	4.8	6.0	6.0	7.2	10.0
2	No load speed	rpm	6830	6680	6590	7260	7010	6880	5980	6520	6730	6520	6980	7040	6570	6690	7070
3	No load current	mA	78.8	63.9	49.9	42.7	32.6	26.3	21.8	18.3	15.3	12.2	10.1	8.15	7.43	6.33	4.92
4	Nominal speed	rpm	5250	4520	4040	4140	3010	2250	2990	3260	1440	1470	1680	1680	3290	3340	1660
5	Nominal torque (max. continuous torque)	mNm	0.328	0.416	0.546	0.674	0.892	1.11	0.766	0.832	1.31	1.26	1.31	1.30	0.780	0.805	1.28
6	Nominal current (max. continuous current)	A	0.480	0.480	0.480	0.480	0.480	0.480	0.295	0.260	0.331	0.258	0.214	0.171	0.0992	0.0865	0.102
7	Stall torque	mNm	1.45	1.32	1.45	1.61	1.60	1.68	1.57	1.70	1.71	1.67	1.77	1.74	1.60	1.65	1.72
8	Starting current	A	1.81	1.35	1.16	1.06	0.816	0.700	0.569	0.502	0.417	0.329	0.279	0.222	0.191	0.167	0.132
9	Max. efficiency	%	63	62	64	65	65	66	65	66	66	66	66	66	65	66	66
Characteristics																	
10	Terminal resistance	Ω	0.331	0.533	0.775	1.13	1.84	2.57	3.17	4.78	7.20	11.0	17.2	27.0	31.4	43.2	75.8
11	Terminal inductance	mH	0.0056	0.0083	0.0135	0.0199	0.0333	0.0501	0.0661	0.0993	0.145	0.223	0.346	0.532	0.607	0.847	1.47
12	Torque constant	mNm / A	0.802	0.980	1.25	1.51	1.96	2.41	2.76	3.39	4.10	5.08	6.33	7.84	8.38	9.89	13.0
13	Speed constant	rpm / V	11900	9740	7650	6300	4870	3970	3460	2820	2330	1880	1510	1220	1140	965	734
14	Speed / torque gradient	rpm / mNm	4920	5300	4760	4710	4570	4240	3960	3980	4090	4050	4100	4190	4280	4220	4280
15	Mechanical time constant	ms	18.6	16.3	15.1	14.5	14.0	13.6	13.3	13.3	13.3	13.2	13.2	13.3	13.3	13.3	13.3
16	Rotor inertia	gcm ²	0.361	0.295	0.303	0.293	0.292	0.306	0.322	0.318	0.310	0.311	0.308	0.303	0.297	0.300	0.297

Specifications

- Thermal data**
- 17 Thermal resistance housing-ambient 47.5 K / W
 - 18 Thermal resistance winding-housing 14 K / W
 - 19 Thermal time constant winding 5.08 s
 - 20 Thermal time constant motor 356 s
 - 21 Ambient temperature -20 ... +65°C
 - 22 Max. permissible winding temperature +85°C
- Mechanical data (sleeve bearings)**
- 23 Max. permissible speed 11000 rpm
 - 24 Axial play 0.05 - 0.15 mm
 - 25 Radial play 0.014 mm
 - 26 Max. axial load (dynamic) 0.8 N
 - 27 Max. force for press fits (static) (static, shaft supported) 35 N
 - 28 Max. radial loading, 5 mm from flange 140 N

Operating Range



Comments

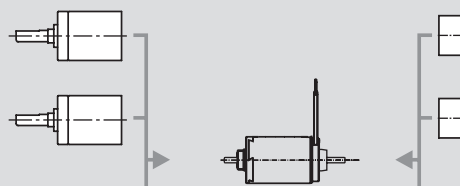
- Continuous operation**
In observation of above listed thermal resistance (lines 17 and 18) the maximum permissible winding temperature will be reached during continuous operation at 25°C ambient.
= Thermal limit.
- Short term operation**
The motor may be briefly overloaded (recurring).
- Assigned power rating**

Other specifications

- 29 Number of pole pairs 1
 - 30 Number of commutator segments 7
 - 31 Weight of motor 15 g
- Alignment of the electronic connections not specified.
- Values listed in the table are nominal.
Explanation of the figures on page 49.

maxon Modular System

- Planetary Gearhead**
Ø13 mm
0.05 - 0.15 Nm
Page 217
- Planetary Gearhead**
Ø13 mm
0.2 - 0.35 Nm
Page 218



Overview on page 16 - 21

- Encoder MR**
16 CPT,
2 channels
Page 252
- Encoder MR**
64 - 256 CPT,
2 channels
Page 253 / 254

Recommended Electronics:
LSC 30/2 Page 276
EPOS 24/1 294
Notes 18