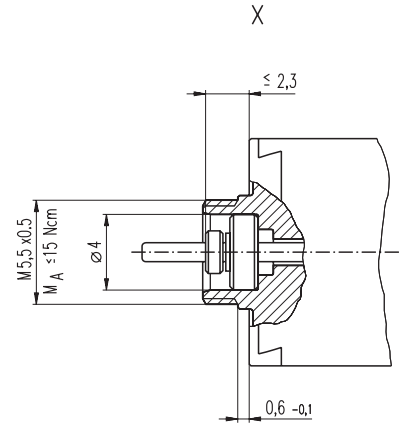
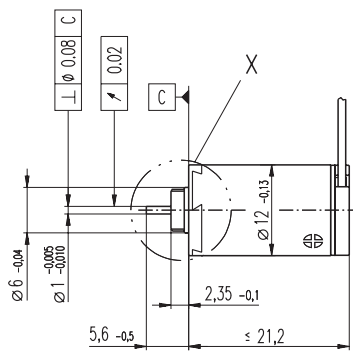
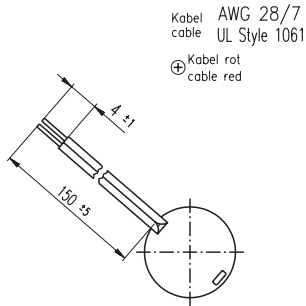


A-max 12 Ø12 mm, Precious Metal Brushes CLL, 0.75 Watt, CE approved



M 1:1

- Stock program
- Standard program
- Special program (on request)

Order Number

200937 **265374** 265375 265376 265377 265378

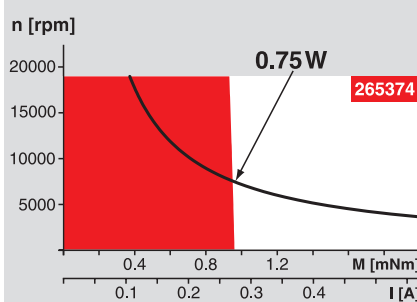
Motor Data

Values at nominal voltage		3.0	4.5	6.0	9.0	12.0	15.0
1 Nominal voltage	V	3.0	4.5	6.0	9.0	12.0	15.0
2 No load speed	rpm	13900	11900	12800	12100	12300	13800
3 No load current	mA	21.1	11.5	9.47	5.87	4.50	4.21
4 Nominal speed	rpm	5930	4360	5250	4460	4610	5030
5 Nominal torque (max. continuous torque)	mNm	0.891	0.959	0.946	0.941	0.931	0.804
6 Nominal current (max. continuous current)	A	0.462	0.281	0.225	0.141	0.107	0.0836
7 Stall torque	mNm	1.58	1.55	1.63	1.52	1.52	1.29
8 Starting current	A	0.789	0.438	0.374	0.220	0.168	0.129
9 Max. efficiency	%	70	71	71	70	70	68
Characteristics							
10 Terminal resistance	Ω	3.80	10.3	16.0	40.9	71.6	116
11 Terminal inductance	mH	0.0851	0.263	0.402	1.01	1.74	2.13
12 Torque constant	mNm / A	2.01	3.53	4.36	6.92	9.06	10.0
13 Speed constant	rpm / V	4760	2710	2190	1380	1050	952
14 Speed / torque gradient	rpm / mNm	9030	7880	8060	8170	8330	11000
15 Mechanical time constant	ms	20.5	20.2	20.3	20.3	20.4	21.0
16 Rotor inertia	gcm ²	0.217	0.245	0.240	0.237	0.233	0.182

Specifications

- Thermal data**
- 17 Thermal resistance housing-ambient 44.5 K / W
 - 18 Thermal resistance winding-housing 15 K / W
 - 19 Thermal time constant winding 4.99 s
 - 20 Thermal time constant motor 245 s
 - 21 Ambient temperature -30 ... +65°C
 - 22 Max. permissible winding temperature +85°C
- Mechanical data (sleeve bearings)**
- 23 Max. permissible speed 19000 rpm
 - 24 Axial play 0.05 - 0.15 mm
 - 25 Radial play 0.012 mm
 - 26 Max. axial load (dynamic) 0.15 N
 - 27 Max. force for press fits (static) 15 N
 - 28 Max. radial loading, 4 mm from flange 0.4 N

Operating Range



Comments

- Continuous operation**
In observation of above listed thermal resistance (lines 17 and 18) the maximum permissible winding temperature will be reached during continuous operation at 25°C ambient.
= Thermal limit.
- Short term operation**
The motor may be briefly overloaded (recurring).
- **Assigned power rating**

Other specifications

- 29 Number of pole pairs 1
 - 30 Number of commutator segments 7
 - 31 Weight of motor 11 g
- CLL= Capacitor Long Life
Alignment of the electronic connections not specified.

Values listed in the table are nominal.
Explanation of the figures on page 49.

maxon Modular System

Overview on page 16 - 21

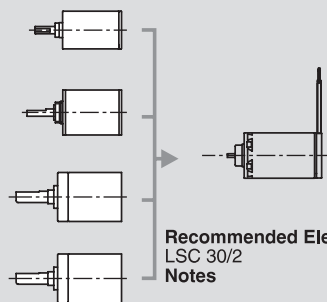
Planetary Gearhead

Ø10 mm
0.005 - 0.15 Nm
Page 214 / 215

Spur Gearhead
Ø12 mm
0.008 - 0.025 Nm
Page 216

Planetary Gearhead
Ø13 mm
0.05 - 0.15 Nm
Page 217

Planetary Gearhead
Ø13 mm
0.2 - 0.35 Nm
Page 218



Recommended Electronics:
LSC 30/2 Page 276
Notes 18